



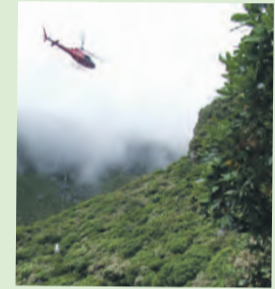
Inside



Cute moggy wants a home. Page 3.



We're with you Hastings. Page 4.



Last touches to Taranaki and Pouakai Crossings. P5



Fleetwood Mac tribute show at Butlers Reef. Page 25



Two days, two Gold medals for Toby. P 24.

Local news, local people, local businesses, local sport, local arts and events.
Delivered free around the mountain every fortnight.



editorial@opunakecoastalnews.co.nz
ads@opunakecoastalnews.co.nz
accounts@opunakecoastalnews.co.nz
Phone: 06 761 7016
23 Napier St, Opunake
OPUNAKE & COASTAL NEWS

Narrow escape for country hall

The Kapuni War Memorial Hall narrowly escaped incineration last week after an abandoned Toyota was set alight.

The car, which had been reported stolen was parked between the hall and the rear fence and torched on the morning of Tuesday February 28.

A police media statement says a 21-year-old man has been arrested on charges which included theft of a vehicle, intentional damage for the burning of the car, burglary, and relating to several incidents from February 19-28.

The owner of the nearby Kapuni store recalls opening up at 6.35am, and then getting himself a cup of coffee.

"I saw a big glow. I thought it was the hall on fire," he said. "I saw it was a car, so I grabbed my garden hose. I thought I can't save the car but I could save the hall, so I started hosing everything."

By that time the guttering above the car was melting, and he was concerned about a nearby gas line.

Sandfords and Fonterra workers on their way to work stopped to lend a hand. They pointed fire extinguishers at the fire, and some Sandfords workers headed off to their base in Auroa to get more..

"We used probably eight to ten extinguishers. The heat was so intense it smashed the hall window. We dampened

the fire but there was no way we could put it out. We were able to contain the fire to a level where it wasn't super threatening, and then the Manaia Fire Brigade arrived. It was a blessing having all these workers there to help put it out. It's amazing the hall did not burn down. It was a community effort to put the fire out."

Manaia Fire Brigade chief fire officer Shane Taylor said they had been alerted at about 6.45am and the fire was fully involved when they got there with bystanders trying to extinguish it. He says one engine attended and were there for about half an hour, while they extinguished the blaze and waited for police to arrive.

The Kapuni store owner says a subsequent viewing of security camera footage showed the car was parked outside the Kapuni store at 2.30am and the occupants were using torches to look aside. An axe was found leaning against the store.

"They were probably looking for smokes, but I don't sell cigarettes and that's why I did not get robbed."

Three day later the hall window had been replaced, but the charred remains of the car still remained parked outside, and a melted door handle had fallen on to the ground. One tyre was all that was salvageable from the blaze.



Fire engulfs a stolen Toyota.

Work begins at Dawson Falls

Although well behind the projected dates for completion (originally late 2022) it is apparent that's things are on the move at Dawson Falls on Taranaki Maunga. Behind the metal mesh fences a digger was hard at work, possibly in the process of establishing drainage for the proposed new structure. A

second unmanned digger was stationed nearby.

The original lodge, at 1890 Upper Manaia Road, Egmont National Park 4642 has been service since 1896. However, it was bought in 2016 by Te Rere o Kapuni, a subsidiary of Te Korowai o Ngaruahine.

A decision was made to demolish the building

because "The lodge is very tired dilapidated and in need of significant repairs."

Dawson Falls Te Re-o-Noke, the nearby 18 metre waterfall on the Kapuni Stream, was discovered by postal worker Thomas Dawson after he was posted to Manaia in 1898. It is at an elevation of 902 metres above sea level. Maori lore claims that a man being pursued escaped by hiding within the waterfall.



The aftermath.



Prefabs are on site in readiness for construction of the new accommodation facility.

Promote your events in the
OPUNAKE & COASTAL NEWS



Letters to the Editor

Send your your views to:
Letters to the Editor
23 Napier Street, Opunake.
Fax: (06) 761 7016

email: editorial@opunakecoastalnews.co.nz
You are welcome to use a pseudonym but must supply your name and address to us.

"Let's create your business growth strategy together"
Your only local community accounting firm



Hawera - Opunake - Patea - 06 278 4169
Opunake Office hours:
Mon & Thurs: 9am-3pm, Wed: 10am-3pm

RENTAL VEHICLES



- CHARTER BUSES
- VANS
- TOUR BUSES

ALUMINIUM SCAFFOLDING FOR HIRE

\$35 per day, \$50 weekend.
More than 6 days \$30 per day.

WATERBLASTER FOR HIRE

Petrol 3000 psi 15L/minC

Cost: Half day \$90, Full day \$120, Weekend \$130. Friday after 3pm return Monday 9am.

Bond for waterblaster and scaffolding \$50.

For more information contact Tracey or Linda at

PICKERING MOTORS

11 TENNYSON ST OPUNAKE Ph 06 761 8363
0800 22 11 20 Email: pickering.motorsltd@gmail.com

OPUNAKE & COASTAL NEWS

Registered office: 23 Napier Street, PO Box 74, Opunake

Phone: Office (06) 761-7016, A/h (06) 761-8206

For advertising, email: ads@opunakecoastalnews.co.nz
For editorial, email: editorial@opunakecoastalnews.co.nz
For accounts, email: accounts@opunakecoastalnews.co.nz

www.opunakecoastalnews.co.nz

Editor: Bernice McKellar

Journalists/Sales: Rolland McKellar, Bryan Kirk

Advertising/Production: Vanessa Smith

Production/IT: Shane Butler

Delivery: Thursday, fortnightly

Registered as a newspaper.

Member of the Community Newspapers Association of New Zealand



The Opunake and Coastal News is distributed free to every home and business within the rural area bounded in the north by the New Plymouth city border, extending east to Egmont Village, and around to the edge of Stratford, south to the Hawera city border and inland to Kaponga and through Eltham.

While we welcome free speech, the views expressed in the Letters to the Editor do not necessarily reflect those of the Opunake & Coastal News. Please limit letters to 350 words as we sometimes struggle for space to fit them all in.

PM and Deputy PM from Waitara

Now what a coincidence to find out that Chris Hipkins and Carmel Sepuloni have connections with my home town of Waitara, but that Chris is now our country's PM while Carmel is Deputy PM.

Another PM Sir Walter Nash lived in New Plymouth and owned a retail shop. Now we have another Labour PM in Chris Hipkins, yet let's not all forget our former lady PM for Labour was Jacinda Ardern also had strong links with our province.

It's extremely sad to hear that former National MP

Chester Borrows from Hawera passed away aged 65. He was also well liked within the National Party as a politician.

Tom Stephens
New Plymouth

Thank you

On behalf of the woman who was seriously injured at the Opunake petrol station on 31st January 2023 and her family, I would like to thank most sincerely the police, Opunake Volunteer Fire fighters and the St John personnel who attended and dealt with her at the scene. She was treated with the utmost respect and concern which both she and her family appreciate

ADELPHOS

Last week I had a delightful telephone chat with an overseas friend. After researching his family genealogy, he described possible links to famous historical people. That association unearthed an exciting journey of self-discovery. He reminisced how in 2004 the British TV documentary, "Who Do You Think You Are?" had reignited a popular interest in family origins. I then explained how very important whakapapa is in our New Zealand Maori culture and how it connects people to their ancestors, their land and tribe. He was fascinated and I emailed him more information.

Back in the 1950s a groundbreaking scientific unveiling of our origins hit media headlines with James Watson's

and Francis Crick's discovery of the DNA molecule or Deoxyribonucleic acid. It carries highly complex and genetically designed information. Our DNA describes what we all have in common but also what makes each of us unique. Although our DNA is 99.9% identical to anyone else on the planet, it's the different .1% in each of us that makes us unique in terms of our abilities, health and our environmentally influenced behaviours. DNA provided groundbreaking genetic answers as to who we think we are as a species.

In numerous university opinion polls, 85-97% of the scientific community denied the possibility of an intelligently designed human body, creation and universe.

very much.

She was discharged from Base Hospital late that night and transferred to Christchurch Hospital where she has spent four weeks and subsequently has had several operations.

Once sufficiently recovered she will be going to Burwood Hospital for rehabilitation.

The residents of Opunake and the surrounding districts should be very proud and supportive of the professional services available to them should the need arise.

Thank you all so much.
"Big Sister"

Look after our wetlands

Look, I certainly agree with our Fish and Game NZ Corina Jordan telling us all that we must seriously consider saving our wetlands as there's only nine per cent

left in the country, as these wetlands play an extremely vital part in keeping our country's streams, lakes and rivers pollution-free.

For some time Maori and European people have always been able to pick watercress, but because of our wetlands being destroyed watercress has been hard to come by, while by the same token, everyone loves swimming in our lakes and rivers, and doing any type of water activity, yet start moaning and groaning if we can't simply because our waterways have been polluted. It's now becoming essential to keep our wetlands. Listen to not only what this lady is saying, but what our Maori people, and even begin to create more wetlands, so not only that we can drink clean water, but also to have baths and showers in our homes. If we all look after our environment it will look after us.

Tom Stephens
New Plymouth.

Just who do you think you are?

Although most evolutionists openly admit that human life and all life appears intelligently designed, they nonetheless claim they are the result of unpredictable mutations. That is, they assert that humans today are descended from a single-celled bacterial ancestor. Continual DNA protein-related mutations then continued over billions of years. Time somehow transformed what seemed to them a mathematical impossibility into today's human being.

Lastly, the Bible is saturated with hundreds of references that people and all of creation are made by God: We are created in His own image by a personal and intelligent Being (Genesis 1:27; Psalm 139:13). God's

Word says that Jesus was part of the triune Creator Godhead (Father, Son and Holy Spirit) who made all things (Colossians 1:16-17; John 1:3,10; 1 Corinthians 8:6).

Everyone is unique as our DNA proves. That's why every individual is so special that God chose to visit earth that first Christmas and later died to offer all of us the "opportunity" to be saved from the consequences of our sins (Romans 6:23 NIV).

These are a few popular explanations of our origins as a species and as individuals. So what are your roots? And who do you think you are?

Manaakitanga,
Adelphos

Seventy five minutes of exercise a life saver

Exercising for just seventy five minutes a week can substantially reduce the risk of early death and disease,

according to an international systematic review and meta-analysis. The researchers looked at the combined

results of nearly 200 studies looking at links between physical activity and deaths from all causes. They say among the millions of people included in these studies, one in 10 early deaths could have been prevented by

hitting that 75-minute mark. So people get your running shoes on and get off the couch.

British Journal of Sports
Medicine



Taking bookings now

Coastal Welders
06 752 8138 027 255 8677
coastalwelders@xtra.co.nz

The heat is on!

SAVVY GAS
PLUMBING AND DRAINAGE

OUR SERVICES
SERVICING NEW PLYMOUTH AND TARANAKI WIDE

- HOME HEATING • DRAINAGE • PLUMBING
- ROOFING • GAS FITTING

Any job, we will get it done on time in budget

Call Us 06 765 5336
Email Us info@savvygas.co.nz
www.savvygas.co.nz

100% LOCALLY OWNED & OPERATED

EDITORIAL

Rob Campbell instantly sacked

Although the new health minister Dr Ayesha Verrall has been in her role barely a month, one of her first initiatives has been to sack Rob Campbell from his position as Chairperson of Te Whata Ora Health NZ. The word knee-jerk reaction springs to mind.

She considered that he was not adhering to the code of expected behaviour for a person in his position, although he insists that his adverse comments about the National Party's proposed water reforms were his personal opinion and that he was not speaking on behalf of the Crown entity board he was leading.



Rob Campbell.

the Minister for the Environment David Parker

sacked Rob Campbell from his chairpersonship of the Environmental Protection Agency (EPA), having beforehand sought professional advice.

Surely, this drastic action, in both cases, was taken too quickly before there was time for discussion, conciliation and the possibility of agreed positive alternatives over a period of time. Generally, before an employee is dismissed there is a prolonged procedure involving consultation, discussion and the chance for the employee to change how he or she operates in the workplace. With a person of Mr Campbell's standing should not he be allowed the

same process?

In a democracy it is important that people voice their personal views, although with the understanding they are speaking solely for themselves. Mr Campbell had said that his positive views on co-governance underpin ministers' objections to his continued work with boards. If the Code precludes this then it would seem that the Code itself needed amendment, so it aligns better with our democracy.

Perhaps also kept in mind is Voltaire's dictum (paraphrased), "I (may) disagree with what you say, but will defend to the death your right to say it."

"It is troubling culture that

when many, who want to push for change, were too scared to speak out for fear of losing their jobs," Mr Campbell has lamented.

As a result of Mr Campbell's twin sacking this unfortunate situation will be worsened. This is a pity as we need all the good ideas and initiatives we can get from some very skilled people as to where and how systemic improvement can be met.

It would be good if Rob Campbell can be returned to his positions as he obviously has much to offer in his roles, calling on his high level experience. Mr Hipkins needs to step in here.

Black and white moggy seeks food and home in Okato

For most of this year a young looking black and white cat has been visiting us at our home in Okato. It is usually hungry and sometimes would try to enter the house through the catflap and some fearsome fights occurred with our two cats. They were just being territorial, but the visitor was only looking for food.



A midnight feast.

More recently we have been leaving some food in a plate at the edge of the veranda and the fights have pretty much stopped. The cat arrives almost without fail around 6am each morning.

The cat is quite nervous, but we have finally managed to get a photograph of it. Hopefully, someone will recognise it.

A photograph of a similar looking missing cat was posted on the Okato Four

Square noticeboard, but when we went to get the owners details it had been taken



Another view of our feline visitor.

down. It is quite possible our feline visitor is their missing cat. Could the owner of the

missing cat or anyone else who knows whose cat this is please contact us as soon as

possible. You can contact us on 027 752 4377 or 7617016 (Opunake and Coastal News).

Is there life on Mars?

NASA's little rover friends Curiosity and Perseverance have been scouting around the Martian landscape for years now, but international researchers say they may not have sensitive enough instruments to be able to

detect life on Mars. The team tested modern lab equipment against copies of the tools on the rovers on sedimentary fossils found in the Atacama Desert in Chile and say that the Martian instruments were barely able

to detect anything, whereas the modern gear found a mixture of both extinct and living microorganisms. The findings indicate that similarly low levels of organic matter, expected to be present if there was life on Mars billions of

years ago, will be difficult if not impossible to detect with the technology currently used on Mars.

Nature Communications

Natroceutics®
OMEGA 3 FORTIFIED

WILD & PURE OMEGA 3
WITH LUTEMAX AND VITAMIN K2

FOR ENHANCED CARDIOVASCULAR, COGNITIVE & EYE HEALTH BENEFITS

Improves:

- Visual Performance • Visual Acuity • Contrast Sensitivity
- Light Sensitivity

Additional Major Benefits:

- Predominant carotenoids in the brain and important for cognitive function
- Supports skin health • Supports skin health

The Health Shop Centre City | 06 758 7553

HEADSTONES TARANAKI

Taranaki owned and operated

We create all types of new memorial work and restorations, including second inscriptions, repainting and cleaning existing memorials.

We also specialise in unique stone works for special projects.

TINY AUSTIN
021 663 199
tiny@headstonestaranaki.co.nz

YAMAHA
Revs Your Heart

Yamaha YXE850 Wolverine X2 Utility

***\$26,499**
ONLY ONE AT THIS PRICE
Ride away price incl GST

* Terms and conditions apply

BAILEY
MOTORCYCLES & DISASSEMBLERS
HAWERA

YMI
YAMAHA MOTOR INSURANCE

YMF
YAMAHA MOTOR FINANCE

06 278 4756
309 SOUTH ROAD HAWERA
BAILEYMCPARTS@XTRA.CO.NZ
WWW.BAILEYMOTORCYCLES.CO.NZ
SAT 10AM-12PM

We've got you, Hastings

THINKING OF BUILDING IN 2023?

Start the design process with the Fowler Homes Taranaki team today.



Give Jason or Tony a call 0800 436 9537.

YOUR STYLE OF LIVING www.fowlerhomes.co.nz



As the country gets to grips with the devastation caused by Cyclone Gabrielle, the New Plymouth District Council (NPDC) has joined a nationwide initiative to target help to the worst-hit districts.

Adopt a Community is a Tātou LGNZ (Local Government New Zealand) initiative for councils to support badly affected areas to get back on their feet by encouraging financial donations and adopting a city to help.

NPDC has been paired with Hastings District Council.

"Kiwis always come together in tough times, and I know Taranaki residents will step up and help Hastings residents rebuild after colossal cyclone Gabrielle which will take years," said Mayor Neil Holdom.

"If Cyclone Gabrielle had tracked a few degrees off the course it took, Taranaki might have suffered the loss of life, homes and



A house in Pakowhai, Hawkes Bay in the aftermath of Cyclone Gabrielle.

Photo supplied.

livelihoods, and we'd be asking for help. But we got off lightly, so now we need to roll up our sleeves and pitch in by making a financial donation to the Hawke's Bay

Disaster Relief Trust Fund 02-0700-0010824-002."

Financial donations will help with fixing power, water, bridges networks. Hawke's Bay Disaster

Relief Trust Fund was set up in 2020 by the region's mayors and regional council chairperson when the area was hit by severe drought.

Simple But Significant

a simple cremation & burials

Helping Taranaki families with a range of simple, professional funeral services. With affordable caskets, urns & jewellery.

0800 236 236 233 Carrington St New Plymouth www.asimplecremation.co.nz

New Zealand's wild weather

It has been a summer to remember, but not in a good way.

February 2023 will go down as the month that Aotearoa New Zealand experienced one of its worst weather disasters.

On February 13-14, Cyclone Gabrielle caused historic extreme rainfall and river flooding, catastrophic wind damage, and substantial storm surges across the North Island. This culminated in widespread destruction and loss-of-life, with a long and costly recovery ahead.

February rainfall was nothing short of exceptional. - Parts of the North Island received at least 400% of their normal February rainfall. o Napier had its third wettest month since records began, receiving over 600% its normal (and 45% of its annual normal). The highest 1-day rainfall was 316 mm, recorded at

Tūtira (Hawke's Bay) on 13 February. - However, in parts of the South Island, rainfall was below (50-79%) or even well below normal (<50%), as was seen in Fiordland.

Summer rainfall was also noteworthy. It was the second wettest summer on record for the North Island. The Auckland region received over 5.5 times its normal summer rainfall and 63% of the entire annual normal. It was the wettest summer on record for several major centres, including Napier, Auckland, Whangārei, Gisborne, and Tauranga. It was the fifth driest summer on record for the South Island. Meteorological drought developed in Otago during February, with many areas recording less than half of their normal summer rainfall.

Extreme low-pressure readings speak to Cyclone Gabrielle's power. On 14 February air pressure dipped

to 968 hPa at Whitianga in the Coromandel Peninsula - the second lowest daily minimum value observed in the North Island since 1960

Soil moisture was a tale of two halves: At the end of February, soil moisture levels were well above normal across most of the North Island and in parts of Marlborough and Canterbury. - Soil moisture levels in the northern West Coast, western Tasman, the Mackenzie Basin, and Southland were below normal

Cyclone Gabrielle brought destructive winds. Eighteen locations observed a record or near-record high summer wind gust. The highest wind gust was 150 km/h, observed at Mokohunau Islands on 12 February.

It was not only wet, but warm. The nationwide average temperature in February 2023 was 18.5°C, 1.1°C above the 1991-2020 February average. Temperatures in the West

Coast were particularly noteworthy, being the warmest February on record for Greymouth, Westport, and Arapito

- Greymouth recorded seven days with a daily maximum temperature above 25C (between 1972-2000, Greymouth only had six total February days when the temperature exceeded 25C.

- The highest temperature was 35.6°C, observed at Middlemarch (Otago) on 4 February.

It was the third warmest summer on record. Sixty five locations experienced record or near-record warm minimum temperatures

- Summer sea surface temperatures were record breaking (since at least 1982) in the west of the South Island. In the north and east of the South Island, summer sea surface temperatures

Continued page 5.

You can rely on us for your energy needs www.rockgastaranaki.co.nz



Transform your home - all your hot water, space heating and cooking needs from your trusted local Rockgas supplier.

Count on us - reliable delivery of 45kg LPG cylinders to your home, business, or farm where ever you live.

Locally operated and proud to be part of your community



Call Rockgas Taranaki 0800 LPG 2 YOU or 06 757 9264

POWERWORX

Power Supply Rural & Residential

Design, upgrade and repair overhead and underground power supplies

- Powerco Approved
- Underbores - wires and pipes
- Powerline maintenance
- Fault repair
- Subdivision power installation
- Vegetation control around powerlines
- Network connections
- Transformer & line upgrades
- Specialists in rural power servicing and installation

0800 877 746

Taranaki Region
Contact Bruce Wilson Manager
58 Glover Road, Hawera Ph: 06 278 4514
Email: powerworx@obertech.co.nz

CRAWFORD

AGRITECH Ltd

| TRACTOR & MACHINERY SERVICE & REPAIRS
| ON FARM SERVICING
| AIR CONDITIONING SERVICE, REPAIRS AND HOSE MAKING
| SPARE PARTS & FARM OILS
| IMPLEMENTS & ATTACHMENTS - SALES AND SERVICE
| FACTORY TRAINED TECHNICIAN
| TARANAKI & WANGANUI INDEPENDENT FERGIE TRACTOR SPECIALISTS

Ph 06 762 8023
Ian Crawford
Mob 0272 207 701

MASSEY FERGUSON | FORD | SAME | LANDINI | ISEKI | VALTRA | MATBRO
INTERNATIONAL | MERLO | DAVID BROWN | RENAULT | URSUS | JOHN DEERE

the winning formula since 1869

New rating valuations for New Plymouth District

New Plymouth District property owners will receive a Notice of Rating Valuation in the post with an updated rating value for their property.

The new rating valuations have been prepared for 37,839 properties by independent experts Quotable Value (QV).

Careful analysis shows the total rateable value for the district is now \$36.1 billion, with the land value of those properties now valued at \$21.7 billion.

On average, the value of residential housing has increased by 49.7% since 2019, with the average house value now sitting at

\$735,000. QV Property Consultant Andrew Jaques commented: "New Plymouth District hasn't been immune to the significant value growth seen nationwide in recent years, which was primarily driven by record low interest rates. Though that growth has fallen away from the

height of the market, values remain well above where they were at the previous rating valuation in 2019."

The local commercial and industrial sectors saw largely similar increases across the district. Commercial property values increased by 24% on average, and property values

in the industrial sector have increased by 43% since the district's last rating valuation. Commercial and industrial land values have also increased by 44% and 46% respectively.

Since 2019, the average capital value of an improved lifestyle property has increased by 50% to \$1,025,000, while the corresponding land value for a lifestyle property increased by 71% to \$620,000. Mr Jaques said the strength of lifestyle market, typically aligned with high-end residential properties.

Rating valuations are usually carried out on all New Zealand properties every three years to help local councils set rates for the following three-year period. They reflect the likely selling price of a property at the effective revaluation date, which was 1 August 2022, and do not

include chattels.

Any changes in the market since that time will not be included in the new rating valuations. Often this means that a sale price achieved in the market today will be different to the new rating valuation set at 1 August 2022.

The updated rating valuations are independently audited by the Office of the Valuer General and need to meet rigorous quality standards before the new rating valuations are certified. They are not intended to be used as market valuations for raising finance with banks or as insurance valuations.

New rating values will soon be posted to property owners. If owners do not agree with their rating valuation, they have a right to object through the objection process before 13 April 2023.

New Zealand's wild weather

Continued from page 4.

were the second highest on record

The sunniest four locations

so far in 2023 are: Central Otago (562.6 hours), West Coast (548.6 hours), Mackenzie Basin (545.4 hours), - Queenstown Lakes

District (526.7 hours).

The sunshine hours in Hokitika were twice as much as those in Dannevirke and Dargaville.

- Typical of La Niña summers, higher-than-normal air pressure was observed to the east and south of New Zealand, with lower-than-normal air pressure to the north and west. This resulted in more easterly and north-easterly winds than usual, drawing in warm and humid air from the tropics and sub-tropics. This partly explains why persistently wet and cloudy weather was experienced in northern and eastern parts of both Islands, with sunnier and drier conditions in the west and south of both islands.

- Exacerbating the warmth, humidity, and moisture availability to passing low pressure systems was a protracted marine heatwave (MHW) that peaked during January and rivalled the MHWs of 2017-2018 and 2021-2022

A warmer atmosphere can hold more water vapour, which leads to heavier rainfall totals - NIWA scientists are contributing to an attribution study on the influence that climate change had on Gabrielle.



Work nearing completion

This photos were taken by well-known Taranaki mountaineering personality Ian McAlpine when walking the section of track between

the North Egmont Road End to Holly Hut. The track contractor was on the last stages of the Taranaki and Pouakai Crossing

Treks Tracks upgrade, and spreading shingle on that section of the track. Photos Ian McAlpine.



Viv Scott

027 441 4596
viv.scott@eieio.co.nz



Tara Gibson

027 766 4456
tara.gibson@eieio.co.nz



Your Local Team in Real Estate
www.eieio.co.nz

LAWYERS

OPUNAKE LAWYERS

Thomson O'Neil & Co.

Our Opunake Office is attended by:

Robert England on Wednesday & Fridays
for buying and selling houses, farms & businesses; Trusts, Wills and Estates.

Mark Utting on Thursdays
for buying and selling houses, farms & businesses; Trusts, Wills, Estates and refinancing matters.

FOR ALL YOUR LEGAL REQUIREMENTS

30 TASMAN ST, OPUNAKE

PH: 761 8823



Grazing Available
For May to May heifers.

Graze with me and watch your investment grow by receiving monthly report and all animal health will be taken care of

Ph Richard
027 510 9667

67 Breakwater Rd (up Norma's Way) • NEW PLYMOUTH • PHONE 06 751 5065
FAX: 06 751 5085 • WWW.NEWTONGORDGE.CO.NZ

ALL DOMESTIC & COMMERCIAL JOINERY




• Kitchens • Stairways • Vanities • Lounge Units • Bench Tops • And More

Lowered communication lines cause alarm in Opunake

Around 11am on Monday March 6 the Opunake Volunteer Fire Brigade was called out to a situation at the southern entrance to Opunake, as phone lines, criss crossing the road, had sagged well below their optimal height. The reason for the situation is unclear, but wind has been a contributing factor, according to Chief Fire Officer Andrew Pentelow.

trucks went under the sagging lines if there was insufficient clearance. In fact, only one truck had to be stopped until Chorus, who arrived promptly at 11.20am, could remedy the situation. One truck, travelling south, however, did not have enough clearance and the roof brushed the sagging lines. (It was just as well that they were not power lines).

Andrew was pleased with how the call-out went. "We just guided the traffic and it was all good."

Several fire fighters were busy directing traffic, in both directions. In particular, it was important to ensure no



Call out for communication lines.

When technology can be a godsend

After a short break from training over the Christmas holiday period, our firefighters are back to Monday night training.

We have three recruit fire fighters who are going away for their week long recruit course in mid-April, so if you have been seeing us around town a bit more, it is because we have been doing some extra training with them.

of 11 lives. Two of these deaths were firefighters from the Muriwai Volunteer Fire Brigade. Opunake along with other fire stations around New Zealand flew their flags at half-mast in a sign of support and respect.

Because of our wet summer, Taranaki along with most of the North Island are still in an open fire season, with most of the South Island in a restricted or prohibited fire season. This could soon change with windy or dry conditions. For up-to-date information on our fire season

go to www.checkitsalright.nz or visit our facebook page "Opunake Volunteer Fire & Rescue."

To date we have had 11 calls since the start of the year. Love it or hate it, technology can be a godsend or a curse and in two of these incidents it was found to be a godsend. The Iphone 14 has a feature that if it detects a crash it will automatically call 111 and that's exactly what it did in these two cases. The phone will call 111, turn on the mic and the operator can hear what is going on the back-

ground, it will also give an exact location, which in both cases was also needed.

A big thankyou to a local farmer for the donation of two toolbox sets for our trucks. The ones we had were in pretty bad shape with most pieces missing. The donation from a Taranaki firm for helicopter landing lights and wind meter was also very much appreciated. With the rescue helicopter being used more often, these will be especially useful at night.

Andrew Pentelow (CFO)

Check us out for all your aluminium needs!

LET US CREATE THE PERFECT LOOK FOR YOU!

We do the lot: Doors, Windows, Security Doors, Conservatories

Nebulite
WINDOW AND DOOR SOLUTIONS

Paul Tofts, Manager
76 Portia St, Stratford | 06 765 0558
M: 027 200 5556 E: paul@nebulitetaranaki.co.nz

Stratford Knit and Sew

Haberdashery, quilting materials and supplies. Wool, patterns and needles. Embroidery and cotton.

Open:
10am-4pm Mon-Friday
10am-12pm Saturday

Phone: 06 765 4181
202 Broadway, Stratford
www.stratfordknitandsew.com

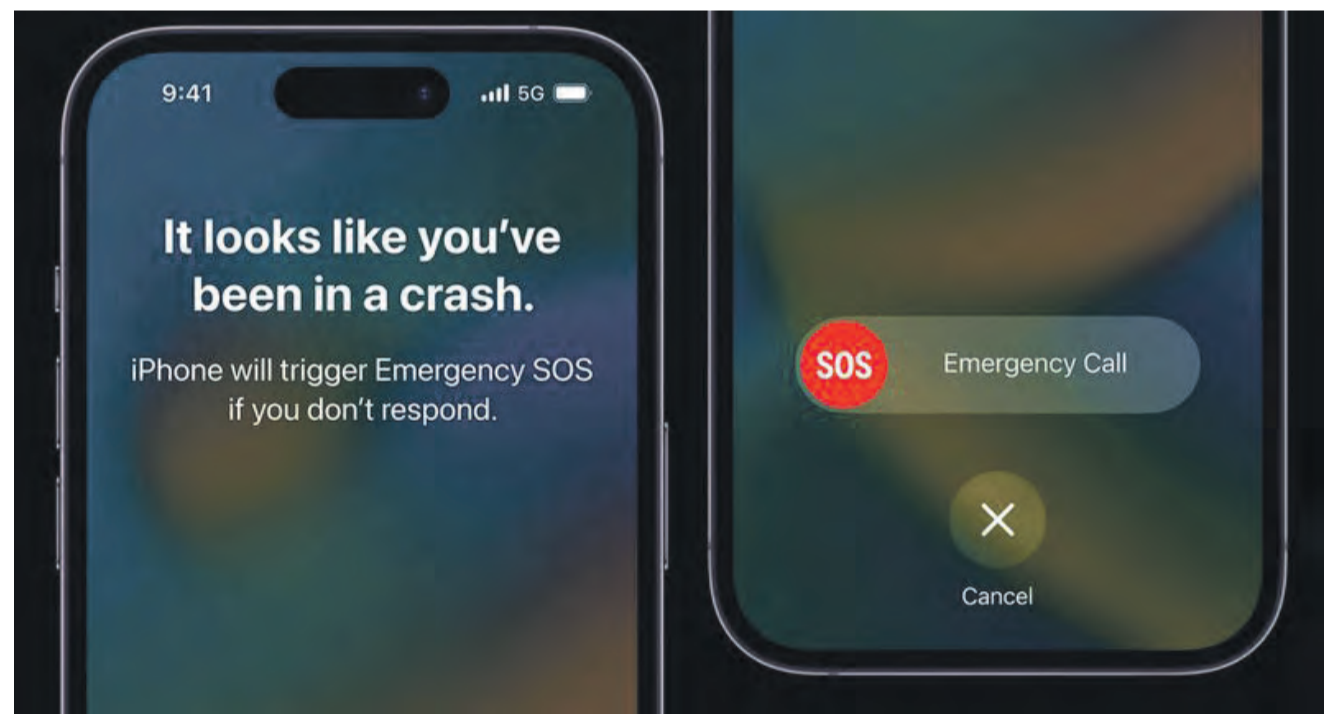
TransAgCentre
AGRICULTURE

BA PUMPS & SPRAYERS

SPRAYERS AVAILABLE NOW
ENQUIRE TODAY

Walco
WEED WIPERS
WITH TIME OUT SWITCH

CASE II **KUHN** **KRONE**
New Plymouth Hawera
Branch: 06 758 2274 06 278 5119
Paul: 027 498 7277 Raymond: 027 444 8861



An added feature of an Iphone14 when in trouble on the road.

POWERLINE FAULTS AND SERVICING

From a fuse or broken insulator replaced to a complete powerline rebuild

Call: **TOP OF THE LINE** ELECTRICITY SERVICES

Greg Lewis: 027 453 0326
Justin Robinson: 027 445 9162

Powerline Servicing Specialists
Free line inspections
Free advice | Free quotes

BREWER'S UPHOLSTERY

CARPET OVERLOCKING

LOUNGE SUITES, ANTIQUES, OFFICE FURNITURE, DINING CHAIRS, FRAME REPAIRS, GENERAL UPHOLSTERY, PVC WELDING REPAIRS

STEPHEN
105 MANAWAPOU RD, HAWERA
PH 06 278 4337 OR 027 4491 437
brewersupholstery@outlook.com

Interest rate hikes wipe out housing affordability gains

Housing has become more affordable on some measures, but due to continued rate rises, mortgage repayments are still eating up a big chunk of people's income, according to the latest CoreLogic Housing Affordability Report.

Kiwis are spending more than half of their income (53%) on mortgage repayments to service an 80% LVR mortgage.

CoreLogic NZ Chief Property Economist Kelvin Davidson said this shows affordability remains significantly stretched. "The percentage of income required to service a mortgage has shot back up from 50% in quarter three last year, matching the previous peak in quarter two

last year and well above the long-term average of 38%. "The falls in property values that we've seen in recent months will in part have helped the required debt servicing costs for a home-buyer, alongside higher incomes, but these effects have been outweighed by the rise in mortgage rates themselves," Mr Davidson said. "In other words, this measure is signalling that housing is still as unaffordable as ever."

However, Mr Davidson said the pressure could start to come off homeowners over the next three to six months, if mortgage rates flatten, house prices continue to fall and wages rise. "That would mean affordability as measured by mortgage repayments as % of income should start to

improve," he said. Properties in New Zealand are now valued at 7.8 times the average household income.

This is well above the long-term average of 6.0, but it has fallen in recent months as property values have dipped and incomes have continued to rise.

"The latest figure of 7.8 is well down on the peak of 8.8 seen during the first quarter of last year. While it's still stretched, it's reassuring to see affordability on this measure has started to improve steadily," Mr Davidson said.

Wellington City has overtaken Christchurch as the country's most affordable main centre on the home value to income ratio.

A sharp decline in house

prices in the capital (-18% from the peak) has taken affordability back fairly close to pre-Covid levels on most measures.

"Incomes have been rising steadily in both markets, but with Wellington recording larger falls in home prices than Christchurch, the balance of affordability has shifted more significantly," Mr Davidson said.

The amount of time it takes to save a deposit is still high - 10.4 years - but down from the worst point of 11.8 in the first three months of last year.

"Saving the typical deposit is still a hurdle for would-be first home buyers, but the wider housing downturn has started to make this appreciably easier than it was about 12-18 months ago," Mr Davidson said.

Tauranga has the longest period of time required to save a deposit of any of the main centres, at 13.7 years, well above its long-term average of 10.8 years, and the national figure of 10.4 years. However, it has started to improve, having peaked at 15.9 years in Q1 2022.

It's emerging good news for tenants who are saving for their first property.

"Rents currently absorb 22% of household income nationally, but this has stopped rising as rents have flattened off and incomes have risen, with a further improvement probably in

the pipeline in the coming months too," Mr Davidson said.

However, this could be little consolation if unemployment begins to tick up, Mr Davidson warned.

A flattening-off of mortgage rates, coupled with further house price falls and continued income growth could offer some respite for borrowers in the future.

"It's fair to suggest that the worst has passed in this cycle for housing affordability, and as mortgage rates peak, the next few quarters (at least) should look more favourable for home buyers," Mr Davidson said.



Moody sky over Opunake.

Asking prices at least double what they were 10 years ago

Lore tells us that a property's value doubles every 10 years, but whether this is true depends on where you live. New data from realestate.co.nz shows that more than half of New Zealand's 76 districts saw annual average asking prices more than double in the 10 years between 2013 and 2022. For those districts where annual average asking

prices did not double, most saw an increase of around 50% or higher.

The biggest increases to annual average asking prices in the last decade were in Kawerau (up 293.9% to \$494,172), Horowhenua (up 169.2% to \$701,884), Northland's Kaipara (up 165.5% to \$1,075,074), Rangitikei (up 162.6% to \$580,463), and South Wairarapa (up 162.0% to

\$1,033,348).

In Taranaki there were increases of 125.3% in Stratford District, 118.09% in South Taranaki, and 95.3% in New Plymouth.

Sarah Wood, CEO of realestate.co.nz, says the data shows that property values increase long-term:

"Across the board, annual average asking prices have increased in all parts of New Zealand in the last decade,

which I think is important to remember amid the fall we have seen to prices over the last 12 months."

"Peaks and troughs are normal. But this data tells us that we are unlikely to see average asking prices trend downwards in the long run, so those who are seeing a dip in their area shouldn't lose hope," she adds.

hopwood architects

contemporary design studio with a focus on excellent design

residential
multi-residential
commercial
agricultural
community
education

happy to meet for coffee to discuss your project
contact Tom Hopwood (registered architect)
23 Napier Street, Opunakē
022 0915 319

AGRIMEC AUTOS 2022

Phone: 06 761 8999 | 027 354 6017

COME AND SEE US FOR A QUOTE

Specialists in Tyres, Hydraulics & Batteries

We stock a wide range of automotive accessories

38 Ihaia Rd, Opunake
Email: agrimecauto2022@gmail.com

Enjoy Life!

Let us take care of the rest.

SOUTH TARANAKI FUNERAL SERVICES
Ph: 06 2788 088 - 24hrs

Woodward's FIREWOOD

Animal Bedding For
Stand Off Pads
Calf and Goat Sheds
Wintering Barns

- Untreated ground up waste wood —
- Raw material stockpiled then ground to order —
- Pick up or delivered to your farm —
- 9m³ truck loads —
- 65m³ truck loads —

06 755 2047

124 De Havilland Drive, Bell Block • office@woodwardsfirewood.co.nz
www.woodwardsfirewood.co.nz

Horrendous start to 2023

If I thought 2022 was a difficult year for families and businesses, it pales in comparison to the start of 2023. My first column, I thought I'd be acknowledging a change in Prime Minister, my new portfolio and new Select Committee position.

But that fades into oblivion in the wake of what has happened to those living in the North Island, especially the battered northern and eastern regions.

Following last year's wet winter, spring and start to summer, the continued downpours were already leaving their mark on the landscape before we were hit with cyclones Hale and Gabrielle bringing more rain as well as gale-force winds.

The sheer amount of water that fell and the destruction



BARBARA KURIGER MP
TARANAKI-KING COUNTRY
that followed especially in Auckland, Northland, the Coromandel, East Coast and Hawke's Bay has been life-changing for so many.

One scientist has calculated the Esk Valley in Hawke's Bay received enough rain to fill 72 Olympic swimming pools every minute, for six hours, during the height of Cyclone Gabrielle.

Subsequent rain has only added to the catastrophic results.

Overall, the Taranaki/King Country region was very lucky to escape such devastation, with the Waipā district suffering more wind than water, and rural Taranaki faring well considering what was going on elsewhere.

The exception was the Waitomo district where a state of emergency was called on January 25 in the aftermath of Cyclone Hale.

In Te Kūiti, the Mangaokewa Stream burst its banks flooding low-lying properties in the east of town, while power was cut for up to 24 hours. Evacuees were cared for by the people of Te Kūiti Pā and I want to thank the whānau there for moving quickly to welcome them.

Otorohanga suffered some flooding due to rising Waipā River levels, while farming

communities had paddocks under water, stock isolated, silage and crop damage.

Waitomo Caves Village and Marokopa were among those communities cut off by water and slips throughout the district's roading network. The clean-up of those, plus state highways also affected by slips, trees and surface damage continues.

Through this there has been the great co-operation between local mayors, council staff, lines company, roading and Civil Defence teams. I want to applaud for them for the very long days, nights and work in very stressful, trying conditions.

Last, but not least, are the volunteer emergency services, especially our local fire brigades. When trying to get through days and nights with howling winds, pouring

rain and rising water, it's to these amazing people we turn to, to help pull us through.

Thank you all so much.

The year ahead

In January I received the Conservation portfolio. Conservation involves us all and is across every industry, so I'm excited about the work to come.

As a new Environment Select Committee member, I've spent the first weeks of 2023 hearing submissions on the Natural and Built Environment Bill and Spatial Planning Bill.

These are two of three bills drafted by the Government to replace the Resource Management Act. The Climate Adaptation Bill is yet to be introduced.

Listening to these submissions, while we are seeing the regional

destruction on our daily news feeds, has me concentrating on 'where' and 'how' we need to build in the future.

To those who have lost loved ones, homes, livelihoods, animals, treasured mementoes, my heart goes out to you for the toll it's taken.

My hope is that in true Kiwi spirit, while we may be bruised, we are not broken.

For the return to some semblance of normal will take years.

Barbara Kuriger
MP for Taranaki-King Country

Authorised by B Kuriger,
Parliament Buildings,
Wellington.

My thoughts are with many this March

It's been incredible to see so many people, including here in South Taranaki, making donations and offers of assistance to the regions devastated by Cyclone Gabrielle. To support this, our Government has established the new Cyclone Gabrielle Appeal Fund. There's a long road ahead for the worst affected communities, and the ongoing impact will be felt by all of us.

We will also be feeling the recent loss of former MP, Chester Borrows. I'm thinking of his family, friends, and colleagues. I first met Chester when I was at university. He had only been an MP for a year or two when I contacted him for a chat, and we met in his Parliament office.

Over the years Chester was nothing but warm, friendly, and approachable. He always had time to stop



STEPH LEWIS
MP FOR WHANGANUI

and chat.

I have always admired Chester's commitment to our electorate. He continued to serve in many ways, even after retiring from Parliament. One legacy Chester left in people's memories was his ability to regularly meet with our community throughout the electorate – I'm doing my best to do the same.

In February, I attended and spoke at the Ballance Kapuni 40th Anniversary celebrations as the MP for Whanganui and on behalf of Ministers Hon Megan

Woods and Hon Damien O'Connor. Prime Minister Rob Muldoon opened the plant as part of the Think Big campaign of the '80s. Ballance has got behind our Government's push to transform the energy sector, with the establishment of a 'green' renewable hydrogen hub. The project, in conjunction with Hiringa Energy, will produce high-purity hydrogen – for feedstock into the ammonia-urea plant, or for supply as 'zero-emission' transport fuel.

I also spent a wonderful

two days in Hāwera catching up with South Taranaki locals and visitors at the Egmont A&P show, in my Hāwera electorate office, and in town during the AmeriCARna show.

Catch up with me in March at the Prospero Stratford Market on Saturday 25 March, 9am - 12pm, or make an appointment to chat during my Stratford pop-up office on Friday 31 March, 1pm - 2pm at Community House, 52 Juliet Street, phone 06) 278 2180.

Steph Lewis
MP Whanganui

Steph Lewis

MP for Whanganui

Keep in touch:

steph.lewismp@parliament.govt.nz
labour.org.nz/stephlewis

Whanganui office: 06 348 1010

Hāwera office: 06 278 2180

[f /stephlewiswhanganui](https://www.facebook.com/stephlewiswhanganui)

[i /stephlewislabourwhanganui](https://www.instagram.com/stephlewislabourwhanganui)



Authorised by Steph Lewis MP,
Parliament Buildings, Wellington



On this month in history Kate Sheppard born

On March 10, 1848 Kate Sheppard (nee Malcolm) was born in Liverpool, England. She emigrated to NZ in 1869 and married Walter Sheppard.

The social reformer is best known for leading the campaign for women being

allowed to vote. Between 1888 and 1893 she organised five petitions to parliament. The first four were rejected but the fifth one, with 31,872 signatures (about a third of adult women in NZ) carried the day. In 1893 the Electoral Act was amended allowing

women to vote.

Kate was also involved in the Women's Christian Temperance Union, which she joined in 1885.

Kate, whose image is on one of our banknotes (\$10), died in 1934.

0800 HARETE – HERE TO HELP

Connected to our communities
as a List MP & standing of Whanganui
Tūrangawaewae - whakapapa
Ngā mihi nui Whanganui !

0800 HARETE

Harete Hipango List MP based in Whanganui

Authorised by Harete Hipango, Parliament Buildings, Wellington.



A new Nat for Whanganui

Carl Bates wants to win Whanganui back for National. The electorate which stretches from the southern outskirts of Whanganui to the Waiaua River has an interesting mix of red and blue which has been reflected in its recent electoral history. For the last three years the seat has been held by Steph Lewis who won it with a majority of 8191. Previous MPs since 1996 have been Jill Pettis (Labour), Chester Borrows (National) and Harete Hipango (National).

“Whanganui as an electorate needs to have a representative who understands the impact of government policy on small town New Zealand. There’s no incentive to buy a local business in small town New Zealand and keep it going,” says Carl.

He sees red tape and compliance costs, as well as a tendency to centralise in Wellington, as with the



Carl Bates.

Three Waters programme, as being factors which stop business from developing.

Carl grew up in Whanganui where his father had a plumbing business.

He has been a member of the National Party for 27 years, beginning as a Young Nat. He has fond memories of former Whanganui MP Chester Borrows who passed away on February 27. Chester had been very supportive of his nomination, says Carl.

“Chester was a friend who I took a lot of advice from. He was a special MP for Whanganui and worked harder than anyone. He didn’t care who he was talking from or what background they came from.”

A chartered accountant, Carl says he was very lucky to be appointed to boards at an early age. These included directorships of UCOL, Arena Manawatu and a private hospital which included a dementia unit.

He took his business

expertise to Africa where he developed his business Sirdar which trained and ran boards of directors for family companies. This included appointing, and if necessary removing directors who didn’t perform.

He came back to New Zealand and sought the National Party nomination for Whanganui.

“I sold that business so I could dedicate all my time to getting rid of this Labour Government,” he says.

It was while he was in South Africa that he met his wife Candice, a vet who now works in a rural practice near Whanganui. They have two children, Angus (4) and Logan (nine months).

“One’s a Springbok and the other’s an All Black,” says Carl.

He has continued to be involved in a wide range of businesses, including agribusinesses which he says has given him an insight into

how farming interacts with the rest of the economy.

“I’m lucky at the age of 40 to be in a position where I can turn that skill into community service.”

He has had a long time interest in residential property, and a company he is involved with has interests in over 30 properties.

“On my first day at school we were living in a garage,” says Carl. “Ever since then I have had a desire to provide people with houses. We’re not traders. We build houses with a lot less administration and cost than Kiwibuild does.”

In the meantime Carl has been introducing himself to the Taranaki end of the electorate.

“I’ve got to work hard to get the respect of these constituents at the northern end of the electorate and I intend to work hard to gain that.”

EPA looks to revise cosmetic rules

The Environmental Protection Authority (EPA) is seeking views on updating the rules for certain ingredients found in cosmetic products. The proposal is for a number of changes to the existing rules to align with developments in the European Union (EU) and further protect consumers.

Among the EPA’s proposed changes is a requirement for products that are not classed as hazardous substances, but which include a hazardous ingredient, to comply with the existing rules.

“This will make it easier to enforce rules for banned and restricted ingredients that may be in cosmetic products,” says Dr Shaun Presow, hazardous substances reassessments manager.

“We’re committed to keeping cosmetics rules up to date and these changes will continue to help protect New Zealanders and our environment.”

The EPA is also proposing to ban the use of all PFAS (perfluoroalkyl and polyfluoroalkyl substances), also known as forever chemicals, in cosmetic products from 31 December 2025.

PFAS are sometimes used as ingredients in products such as nail polish, shaving cream, foundation, lipstick, and mascara. They are used to condition and smooth the skin, making it appear shiny, or to improve product spreadability.

“PFAS are not essential

ingredients in cosmetics, and international research suggests that they’re only found in a small number of products. But these chemicals don’t easily break down and may build up in our bodies,” says Dr Presow.

“What we are proposing is a precaution and, if accepted, would make New Zealand one of the first countries in the world to take this step.”

The state of California in the USA was the first major jurisdiction to ban all PFAS in cosmetics in September 2022. This ban will take effect from 1 January 2025.

The EU is also considering a wide-ranging ban on PFAS in all non-essential products, including cosmetics.

This public consultation enables the wider public and those in relevant industries to provide additional information and feedback on the proposed rule changes for cosmetic products.

Submitters can provide information, make comments, and raise issues to contribute to the EPA decision-making process.

Submissions close at 5.00 pm on 31 May 2023.



for sale

Handy Coastal Runoff

eieio.co.nz REF# OAR00464

207 Warea Road, Warea

Located on Warea Road, this 32.37 ha (80 acre) runoff or support block has plenty to offer. This property is currently running 40 R2 and 40 R1 dairy heifers, approx. 18 Hereford beef cows and calves, along with some mixed age beefies and bulls. With a large proportion of the property being of mowable contour and the remaining easy hill, this is a perfect runoff for running your heifers and cutting supplement or growing some maize. There is a very tidy 3 bedroom family home with detached dbl garaging, large barn/storage shed and a 2-bay horse stable. Vendors are in the process of subdividing the house and an acre of land which may be available to purchase separately.

Deadline for Offers
4pm, Wednesday
29th March 2023
at McDonald Real Estate,
Oakura (unless sold prior)

Viewing
By Appointment Only



Blair Burnett
021 190 7728

eieio.co.nz
TRUSTED IN TARANAKI SINCE 1912

McDonald
REAL ESTATE
MRENTZ LICENSED REAR 2008

Furniture Zone
make your house a home

MATRESSES
ON SALE FROM

\$99

VISIT US INSTORE FOR A LUCKY DEAL!

(06) 215 3020

WWW.FURNITUREZONE.CO.NZ

298 DEVON STEET EAST, NEW PLYMOUTH 4312
TERMS AND CONDITIONS APPLY WHILE STOCKS LAST IN STORE

COASTAL SPORTS CENTRE

78 Tasman Street, Opunake | 06 243 6002

COASTAL SPORTS CENTRE SALE

Taranaki Anniversary is a great time to come visit us at Opunake!

Come and celebrate our first few months of trading in the business formerly known as Collins Sports Centre. We are pleased to introduce Jeff Gorringe to the team.

We are offering 10% off EVERYTHING in store from Saturday through to Monday.

We will also have up to 25% off Red Dot products such as adult bikes and a battery powered Lawnmaster chainsaw. We have a good range of garden tools and mulch products as well as lawn mower parts and accessories.

Come in and check out our awesome new fishing range from quality brands such as Okuma, Kilwell, Black Magic and more.

Clem and Lene welcome you all to our wee town that has a big heart!

Coastal Sports Centre

Opunake & Coastal News

Call our sales team on 06 761 7016

The new man at Coastal Sports



Jeff Gorringe at Coastal Sports Centre shows off camping gear.

The Coastal Sports Centre in Opunake are pleased to introduce and welcome Jeff Gorringe to the team

Jeff hails from a grain farming family in the Bay of Plenty so will have picked a

couple of corn cobs over the years as well as testing the heat electric fences a few times.

Jeff and his young family live in Okato and love visiting neighbouring Opunake for fishing, surfing and the shopping delights in the unique town.

Jeff's main role will be to look after the shop front end, and will be making cameos in the workshop as he is a qualified mechanic and has been turning spanners since he was a child toying with

Meccano sets.

Jeff is an avid vegetable gardener, a mad fisherman in both surf-casting and flyfishing, and enjoys camping in the hills and surfing our awesome local coastline.

Since his arrival to the store in early February, we have made plans to add a lot more products into the outdoor side with tents, quality outdoor-apparel as well as having a finger on the pulse in the fishing department

Jeff has previously been

involved in Hunting and Fishing NZ, and Swannndri, which gives him a broad range of knowledge, which he also shares as a regular contributor for NZ Outdoor Magazine.

Come on in, meet Jeff, pick his brain, and check out our new range of fishing gear from such brands as Okuma, Blackmagic, Kilwell, Fladdon as well as our range of quality lightweight tents from Orson.

Coastal Sports Centre

Don't be shy!
ARE YOU RECENTLY Married?
 We would love to share your special day with our readers! Send in your photo and details of how you met etc, to: editorial@opunakecoastalnews.co.nz

Matthews EYECARE

As well as regular eye exams, we offer specialist services, including low-vision support and post-operative care.

Fortnightly clinics

Coastal Care
 26 Napier Street
 Opunake

To book an appointment
 phone 06 759 4126



... and proud of it

WE WELCOME NEW HOLLAND TO OUR DEALERSHIP
WE NOW SUPPORT CUSTOMERS WITH SALES, PARTS, MAINTENANCE AND WARRANTY

NEW PLYMOUTH
65 KATERE ROAD
PARTS/SERVICE: 06 758 2274

HAWERA
16 GLOVER ROAD
PARTS/SERVICE: 06 278 5119

SALES: PAUL STANTON 027 498 7277 SALES: RAYMOND 027 444 8861

Chester Borrows Outstanding in so many ways

Kerry James Borrows, usually known as Chester Borrows, was born on June 20, 1957 in Nelson, but sadly lost his battle with cancer on February 27, 2023, aged 65. Although best known as an excellent parliamentarian from 2005 until 2017, he achieved in so many ways; he has been an award-winning policeman (for bravery), a lawyer, an archdeacon and an artist.

After leaving Nayland College as a seventeen-year-old he headed to the police college at Trentham in 1975 to eventually graduate as a policeman, based in such locations as Patea, Nelson, Wellington and Auckland. He was awarded the Queen's Commendation for Brave Conduct with respect to his attempt to arrest a man later convicted of murder.

After leaving the police force he studied law and in 2002 was awarded a Bachelor of Laws degree from Victoria University.

By 1987 he had joined the National Party, although earlier had been a Labour supporter. He was selected for the Whanganui electorate in the 1999 general election, but was not elected – the seat being held by Labour's Jill Pettis. (His ranking of 45 was not high enough



Rt Hon Chester Borrows.

for him to become a List MP). He finally made it in 2005, becoming the MP for Whanganui with 15,846 votes to the incumbent's 13,442. He won the next three elections and by the 2014 one his list ranking had improved to 22. Chester decided not to contest the 2017 election.

During his time as a parliamentarian he served on eight Select Committees and was Chair of the Justice and Electoral Committee. He was also a Minister outside Cabinet for Courts and Associate Minister for Justice & Social Development. In 2014 he was appointed Deputy

Speaker.

He was outspoken, sometimes taking a different line that that of his party's. He objected to then leaders Simon Bridges tough on crime stance instead advocating a more rehabilitative approach. More recently he wasn't too keen on the bootcamp and electronic monitoring of offenders suggestion voiced by current Leader of the Opposition Chris Luxon - instead indicating that more social support is needed.

In 2016 he said he was most proud of persuading Justice Minister Simon Power that the DNA of arrested people should be taken as a matter

of course. "That single thing probably prevented more victims than anything we've done," he commented.

In recent times Chester has enjoyed painting landscapes often in a beach setting. These creations have been exhibited in such venues as the Lysaght Watt Gallery in Hawera.

He has also been a valuable member the Parole Board.

As a Archdeacon (since 2021) he has assisted in the restoration of St Mary's Anglican Church in Hawera, including earthquake restoration and the eventual reopening. The Archbishop of New Zealand Philip Richardson has said, "He was a down to earth man with great faith and a pragmatic approach."

Chester was made a Companion of the Queen's Service Order in 2018.

Praise for this remarkable man has come from many quarters. "He was all round decent bloke, a really honest straight shooter," said the prime minister Chris Hipkins. The former parliamentarian Jonathan Young said, "He was respected by and had friends across the political spectrum. Everyone totally respected him. He was passionate about the things he believed

in."

A final comment goes to a friend of his, the former mayor of South Taranaki Mary Bourke, which sums up Chester so adroitly, "The world's a poorer place without him because he made such a huge contribution in so many areas with a huge amount of common sense,

wisdom and humour." Chester is survived by his beloved wife Ella (nee Amosa), his children Zac, Abi and Katy, their partners Kristina, Andrew, Corey, as well as several grandchildren.

Three admirers of Chester Borrows reminisce

Carl Bates

Chester was renowned in the National Party for always making time to mentor and support candidates and new MPs. He gave so much, not just to our communities in Stratford, South Taranaki and Whanganui, but to people he believed could carry on his work as an advocate for our region."

I was at the meeting in 1999 when Chester was selected as a candidate and campaigned with him during that election. He knew people everywhere he went, many of whom he'd helped over his career in the police. His service and how much he loved this community has stuck with me since then.

The fact his funeral is being held in such a large venue is a reflection of the mana of the man and the number of people he's helped throughout his life.

Chester was always incredibly generous with his time for me and I will always be grateful for his advice and guidance."

Neil Walker

Chester Borrows was a very special person. He never lost the common touch even though he rose to very senior positions. I have known him for over 30 years and his deep love for people, sense of fairness and decency was the hallmark of his character. There

are leaders who want to be something and those that want to do something, and Chester was one of those. He will be sorely missed.

Steph Lewis

I was deeply saddened to hear of the passing of Chester Borrows, former MP for Whanganui.

My thoughts and aroha are with his family at this sad time.

I first met Chester when I was at university in Wellington. He had only been an MP for a year or two when I contacted him for a chat. He invited me into his office in Parliament and when I arrived, he had a cup of coffee waiting for me. I politely drank it

feeling too nervous to tell him that coffee gives me migraines. But I shouldn't have been. Over the years Chester was nothing but warm, friendly, and approachable.

In 2008 Chester helped me fundraise to attend a leadership conference in the United States of America. Even after he found out I was a Labour supporter he continued to encourage me and always had time to stop and chat. I never doubted and have always admired Chester's commitment to our electorate. He continued to serve in many ways, even after retiring from Parliament. He was also a devoted family man, and a talented artist.

SCHURR IRELAND
CHARTERED ACCOUNTANTS

NEW PLYMOUTH **ELTHAM**
p. 06 759 0105 p. 06 764 8305

www.schurreireland.co.nz

ELTHAM
BUILDING SUPPLIES

Cabinet Making, Glass Supplies & Custom Joinery Solutions

Donald & Ian Murray

☎ 06 764 8616 📱 027 242 8379
027 348 9445

136 High Street, Eltham
eltham.bs@gmail.com
www.elthambuildingsuppliers.co.nz

gibsonplumbing LTD.

CERTIFIED

Plumbing, Gasfitting and Drain Laying

Plus! Roofing, Wood Fires and other Heating Solutions

06 761 8757 027 445 7164
gibson.plumbing@xtra.co.nz

Full range of precast concrete in stock

Box Culverts - bearers – pipes – troughs – inspection pipes – lids – custom made certified bridge decks



Peter Kuriger Engineering & Concrete

889 Upper Kaweora Road – Opunake 0274 526 718

Our dedicated engineering staff are keen and ready to assist

Gardening with Palmers Gardening Centre



Growing your own vegetables



Delicious fresh and affordable vegetables.

parsley, cauliflower, silverbeet, spring onion, spinach, winter lettuce, and kale.

Once your garden is established, maintenance is greatly reduced thanks to ample rainfall and fewer pest and disease problems. Apply an autumn mulch of Tui Mulch and Feed to restrict weed growth. Some crops may require a cover of frost cloth overnight to protect young tender tips, and regular slug baiting is recommended.

With just two to three crops planted at 10 to 12 week intervals, you can easily cover the full season in a small vegetable plot. So why wait? Start your winter vegetable garden today and enjoy a season full of fresh and delicious produce.

With the cost of vegetables rising by the day why not grow your own? With a bit of preparation and care, you can easily grow a variety of delicious fresh and affordable vegetables all winter.

It's important to ensure that your garden has proper drainage to handle winter rainfall. Raised gardens such as Vegepods are an excellent option and be sure to avoid waterlogged areas. Ample sunlight is crucial for healthy growth, so choose a location that receives plenty of light.

Preparation is key for a successful winter vegetable garden. Enrich your soil

with Palmers Garden X Compost and add Sheep Pellets or Poultry Compost for additional nourishment.

Don't have a traditional garden space? No problem. Winter herbs and vegetables can be grown in pots, troughs, and hangers on a warm, sheltered patio area. Popular choices include winter lettuce, spinach, silverbeet, celery, parsley, and kale.

At Palmers, we offer a range of premium vegetable seedlings specifically bred for cooler weather and shorter days. With high yields, better performance, and low maintenance, these seedlings are the perfect

choice for your winter garden. Each label includes growing information to help

ensure your success.

Some popular winter vegetable seedlings to

consider include broad beans, broccoli, Brussels sprouts, cabbage, celery,

Don't be shy!
ARE YOU RECENTLY Married?
 We would love to share your special day with our readers! Send in your photo and details of how you met etc, to: editorial@opunakecoastalnews.co.nz

HAVE A SAFE-AS-SUMMER

Staying up to date with your vaccinations is the best way to help you and your whānau stay well.

- Child and adult vaccinations
- Measles, mumps, rubella (MMR)
- Antenatal (pregnancy) vaccinations
- COVID-19 (first, second or boosters)

Come along to one of the clinics listed below or visit one of the walk-in vaccination centres in New Plymouth (Baker Tilly Building, 109 Powderham Street) or Hāwera (TSB Hub).

DAY	DATE	TIME	LOCATION
Tuesday	14 March	11am-5pm	Sinclair Events Centre, Ōpunake
Thursday	16 March	10am-3:45pm	Ngāruahine Iwi Health, 36 Patu-Kukupu Street, Manaia

No need to book – just walk in!

Visit www.tdhb.org.nz/covid19/vaccine.shtml for more vaccination clinics.

If you have any special requirements due to disability, impairment or long-term health conditions, please email Covid.VacEnquiries@tdhb.org.nz

Te Whatu Ora
 Health New Zealand
 Taranaki



Crams Cow



Spotted on the corner of Auroa and Opunake Stratford Roads was this creative cow constructed by the Cram family.

Palmers knows plants

At Palmers, you'll find a Garden Centre full of passionate gardeners who are ready to share the joy of good living with you. We are all about creating beautiful spaces, at our place and at yours. We're locally owned and operated, packed with quality products and expert advice for your home and garden.



CAFÉ BOTANNIX

The ideal setting to stop in for a delicious meal, made in-house with seasonal garden produce. Our tranquil garden setting and covered outdoor courtyard is the perfect place to relax after meandering through the garden centre.



Cnr Katere and Devon Rd, Fitzroy, New Plymouth.
 Ph: 06 758 7455. Open 7 days from 8.30am.



Palmers

Taranaki Diocesan student leaders intend to promote greater student participation

Catherine Hurly (17) is the Head Girl at the Taranaki Diocesan School in Stratford and Stacey Lodge (16) is the Deputy Head Girl for 2023.

Catherine's reaction to being chosen: "I was pretty happy, very grateful."

This year she is studying English, Statistics, Biology, and her co-favourites Photography and Legal Studies (by correspondence).

As to an eventual vocation she is not totally decided, but is leaning towards a career in law. She certainly intends university study.

Catherine expects to find some relaxing time away from study and her leadership role to paint some landscapes.

In the recent past she was a keen competitive swimmer. In fact she and Stacey used to race against each other, with Catherine having the winning edge in freestyle and butterfly, but in breaststroke the tables were turned.

As Head Girl Catherine is keen to promote more student participation within the school, with sports and



From left Head Girl Catherine Hurly and Deputy Head Girl Stacey Lodge.

art areas of focus. She also wants the students to be more creative, especially when expressing their own ideas.

Stacey's reaction to being chosen for leadership? "I was so nervous (beforehand). They had been given an envelope, which once opened had the good news: "I was beyond belief, ecstatic," she admitted.

She is studying English, Statistics, Physical Education, Physics, Biology and her favourite Chemistry.

Her interests include swimming – especially breaststroke and, quite recently golf.

In her leadership role Stacey intends to provide a good example to her fellow students including, "setting the right path for the next student leaders." She wants to encourage the junior students in particular to "step up a bit." Also important is "the voice of the students" being heard more clearly. Stacey also intends to promote greater

participation, generally, within the student body.

When she eventually leaves Taranaki Diocesan Stacey intends to study something

science related, which could be in the medical field at Otago University or possibly chemistry related at Victoria University, Wellington.

We wish Catherine and Stacey all the best in their studies and leadership goals.



More formally, Catherine Hurly and Stacey Lodge looking smart in their uniforms.

On this month in history Dr Seuss born

On March 2 1904 Dr Seuss was born in Springfield, Massachusetts. His real name was Theodor Seuss Geisel.

However, he wasn't just a writer for children, he was also a cartoonist, poet, filmmaker and animator.

Although he had over 60

books published and sold in the millions and has had his books published in 20 languages, it didn't start too well. His very first book *And To Think I Saw It On Mulberry Street* (1937) was rejected by 27 publishers.

Most of his books are written in anapestic

tetrameter. His many books include such classics as *The Cat in the Hat* (1957), *Green Eggs and Ham* (1960) and *Oh the Places You'll Go* (1990).

Dr Seuss died on September 24, 1991 in San Diego, California.



AN OFFICIAL WEBER SPECIALIST AND PROUD OF IT.



100%

100% MASON APPLIANCES

84-86 Gill Street, New Plymouth | Ph 06 759 8290

10% off all Weber branded BBQs and accessories in store until Saturday 18th March

A Taranaki Rose

Sophia Hickman has been named this year's Taranaki Rose to contest the New Zealand Rose of Tralee final in Auckland on May 5-6.

On Saturday 25th February the first event started at 11am, a Meet and Greet in the foyer before the welcome by Louise Buhler and introductions by Carol Julian. In attendance was club patron Josie Hogan and daughter Patricia, committee and former Rose judge Kathryn Stanley. The judging panel were Breeda Hawkes, Lisa Rose and

John Lynskey. The reigning 2019 Taranaki Rose Johanna McIntosh travelled from Whanganui. The three Rose entrants were supported by their families and friends.

Individual Interviews were held followed by a group interview with the three judges. After a rehearsal in the ballroom, the Roses had time to prepare for the evening event.

The dinner and dance event started at 7pm with the Roses entering the Ballroom to lively Rose of Tralee music. while being

introduced to the audience and receiving a single rose from Rosebud Maeley Buhler.

Grace was said by Tom Bracken before a three-course dinner. Two Life memberships were presented to Kevin Bracken and Louise Buhler. The Roses had an individual onstage interview and their performance with MC Peter McDonald were followed by a singalong with Pauline Julian. Martha and Ruth Hagenson entertained with singing and Irish dancing



Sophia Hickman Taranaki Rose of Tralee.

mixed with a modern twist impromptu Irish anthem. While the judges deliberated the raffles were everyone with their brilliant drawn. The 2019 Taranaki

Rose Johanna McIntosh spoke about her time as a Rose. The 2023 winner was announced by Kevin Bracken.

Value Farm Sheds

CLEARSPAN OPTIONS AVAILABLE!



Value Farm Buildings are constructed from quality materials that last at prices you can afford. Visit our website for full specs.

VALUE Building Supplies

BuildLink Buy Better Build Better

1 KATERE RD, NEW PLYMOUTH PHONE: 06 759 7435
JAMES ST, INGLEWOOD PHONE: 0800 245 535
www.valuebuilding.co.nz

Skin ON FORTY-FIVE



Left to Right: Dr Shaun Butler, Dr Nick Loveridge-Easter & Dr Brent Anderson

Book Your FREE Vein Assessment Now.

Get your Veins sorted with Taranaki's Gold-standard non-surgical RFA team, with minimal or no time required off work and guaranteed results.

We have a wide range of treatment modalities at our disposal designed to provide the best service for each case.

Radio Frequency Ablation (RFA) – recognised as the gold standard treatment for Varicose Veins giving the best outcomes with the fastest recovery and resolution of your veins. Surgery is no longer needed for the treatment of Varicose Veins.

Ultrasound Guided Sclerotherapy (UGS) – always used in conjunction with RFA for the smaller and tortuous veins. It is also used to treat the cases where RFA can't be used due to the complex nature of some people's veins.

Microsclerotherapy (UGS) – is available for reticular and spider veins for great cosmetic results.

Nd:Yag Laser Sclerotherapy – For the non-invasive treatment of small spider veins and facial telangiectasia.

Skin Cancer Surgery/Management
Eyelid Surgery . Appearance Medicine
Mole Mapping . RF Needling . Laser Hair Removal



*We offer private payment plans and provide insurance accredited services for all the main providers.



100% TARANAKI OWNED & OPERATED

Tuia Taitonga ki Tai

Southlink Coastal



He karere tā te Kaunihera o Taranaki ki te Tonga News from the South Taranaki District Council

Welcome to this special quarterly edition of Southlink for Ōpunakē and Coastal News readers.

Schools Speed Limit Review



We want everyone to be able to get home safely every time, and to feel comfortable choosing from a range of safe travel options be it driving, walking, biking, or scootering. As a Road Controlling Authority (RCA) the Council must follow the Government's Land Transport Rule - Setting of Speed Limits 2022. This Rule requires a safe and acceptable speed on all roads and that each RCA develops a Speed Management Plan.

The Rule also requires that the speeds around 40% of our schools must be reduced before 1 July 2024.

The Council has developed a Proposed Interim Speed Management Plan that focuses on reducing speeds around all South Taranaki schools before 1 July 2024. For those schools connected to a state highway we will work with Waka Kotahi - NZ Transport Agency to reduce the speed on our local (Council) roads when they reduce the speed on the state highways, to achieve a common sense and consistent approach for

A 5% decrease in average speed leads to about a 10% decrease in all injury crashes and a 20% decrease in fatal crashes.

all road users. Speed management is about achieving safe and appropriate vehicle speeds on roads that reflect the road's function, design, safety, and use. Over the coming weeks we will be out and about in our communities advertising and discussing the consultation document. Please ensure you have your say in the Speed Limit Review. The consultation period closes on Friday 31 March 2023.



Visit www.southtaranaki.com/speedreview to read the consultation document. Submit online until consultation closes on Friday 31 March.



Have you taken a stroll around the Manaia Walkway? The newly signposted 1.2km marked pathway ambles through a golf course, historical sites, along Waiokura Stream, surrounded by trees and pasture areas. There are also plenty of rest and historical areas along the way.

Thank you to all of the community volunteers who take care of this pathway, pictured (from left) Gordan Chisnall, Anne Chisnall, John Hughes, Gail Thorley, Allan Forsyth, Maryanne Forsyth. (Absent: Lorna Le Fleming and Bev Roth)



The fastest and easiest way of hearing about Council news, is by downloading the free mobile app Antenno. Antenno sends you alerts and notifications, about places and topics you care about. It doesn't ask for any personal information or log in details.

- Call us 24/7 0800 111 323
- www.southtaranaki.com
- www.facebook.com/SouthTaranakiDistrictCouncil

Encanto & Top Gun: Maverick

Eltham Primary School : Manaia Domain
Saturday 25 March : Sunday 26 March



Drive In Movie Night



GOLD COIN
per vehicle per screening

Don't miss out on this family friendly event!

Get the whanau in the car and come along to one of our Drive In Movie sessions. Encanto will start at 4pm and Top Gun: Maverick at 7.30pm

Drive In Movies in March at Manaia and Eltham

Summer is ending – and what better way to enjoy the end of it than having a fun afternoon watching movies? Two family-friendly movies will be playing on the big screen at Eltham Primary School on Saturday 25 March and Manaia Domain on Sunday 26 March and everyone is welcome to come along and enjoy the afternoon's entertainment. Koha entry only. The movies kick off at 4pm with Encanto (PG), followed by Top Gun: Maverick at 7.30pm. Please note the movie times are approximate only. Bring along a picnic lunch or cool down with an ice cream. Popcorn will be sold on the day as a fundraiser for the Eltham Primary and Manaia Schools, who are also helping out on the day. "This is a fantastic opportunity to have a relaxing family day out while enjoying some great movies on the big screen," says Council's Event Coordinator Emma Vennell. You can enjoy the drive-in movie experience from your car, or take a seat somewhere and watch from there too! These community events are proudly brought to you by South Taranaki District Council and supported by Manaia and Eltham Primary Schools.

www.southtaranaki.com
0800 111 323



Opunakē High School

Te Kura Tuarua o Opunakē

CONTACT DETAILS

P: 06 761 8723
 Tasman Street, Opunakē 4616
 PO Box 4, Opunakē 4645
www.opunake.school.nz
admin@opunake.school.nz

GROWING GOOD PEOPLE FOR A RAPIDLY CHANGING WORLD | HE WAIHANGATANGA O TE TANGATA PAI I ROTO I TĒNEI AO HURIHURI

Principal's Address



Mehemea ka moemoeā ahau, ko ahau anake.
Mehemea ka moemoeā tātou, ka taea e tātou

If I dream; I dream alone.
If we dream together, we can succeed.

So many things to celebrate in these first few weeks of term. Our Kindness Squad spread messages of aroha amongst our kura, on February 17th (Random Acts of Kindness Day). This aroha we passed on to the rohe/community on our Meet the Teachers night, where kai was shared and korero/conversations around teaching and learning took place on a balmy summer's night. Thank you to Sarah Roberts, Donna Aitken, and Pelo Rangi for putting together such a wonderful hangi. Our ākongā/students have also recognised the hardship happening in the areas where Hurricane Gabriel hit, and they have worked hard to raise kai and koha to support the struggling citizens of Aotearoa.

Mana/integrity is incredibly important to our kura, and as such is one of our DREAMS values. Our young rangatira/leaders have been demonstrating mana in the rohe through refereeing in the Primary Schools Touch tournament (Shinae Minhinick, Kiya Tito, Ella Griggs, and Ayla Torbett). Whilst our senior leaders; Harrison Martins, Mahlee Campbell, Joe Edwards, Cayden Marsh and Ella Griggs supported the Board Riders club with beach education, creating a wonderful, vibrant and safe outdoor learning environment for these young tamariki.

Another DREAMS value we grow in our kura is Exceeding Expectations. Our tamariki/children have definitely been pushing their own limits especially in the area of sport. Arna Bright, Paige Taylor and Beth Cook won the Steve McKean Memorial cup in basketball, an incredible achievement for these young wahine/woman. Our recent Cross Country event saw some supreme efforts from our ākongā with our champions being:

Seniors: Luke Forsyth and Paige Taylor

Intermediates: Jayden Poole and Charlie Carr

Juniors: Joshua Ramos and Milly Elsmore.

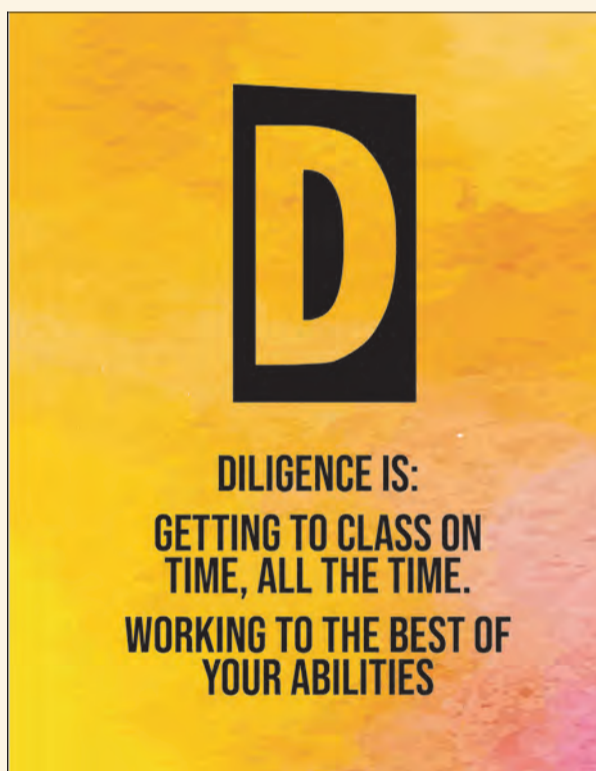
We are continuing to grow our cultural capability and now have a Te Haumoana Kapa Haka group that is 44 strong, and we cannot wait to see our tauira/students rock this space! We have also worked with Blue Light to grow a Waka Ama team and we really appreciate their support of our women of mana. We now have 8 young wahine working hard to row their socks off at the national competition in Rotorua.

Now to diligence, our 'D' value in DREAMS. Hard work, hauora, teamwork and resilience were a huge focus of our mana tane, and mana wahine camps, and a massive thank you to the Toi Foundation for their funding to enable this to happen for our students.

He ora te whakapiri, there is strength in unity. Without the support of our wonderfully generous rohe/community the opportunities for our tamariki would be hugely reduced. A massive thank you to Pickering Motors for driving our boys and girls to their camps, to Bunnings for supporting our Tiny Homes, GoodinAg for their financial support of kura, and St Paul's Op Shop for their annual donations.

Ngā mihi

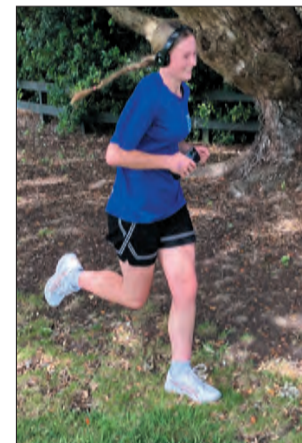
Andrea Hooper Carr
 Principal



Cross Country

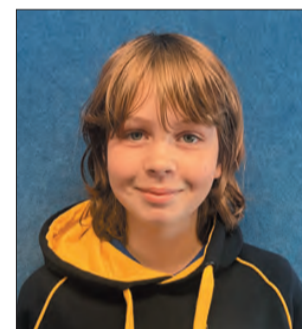
Competition for the Pohutukawa Trophy got off to a flying start on Thursday 28th February with Cross Country as our first event. We weren't exactly expecting the scorching hot weather we got so soon after Cyclone Gabrielle, but the sun was definitely shining and students got around the course in blistering times.

Congratulations to the winners (as listed in the Principal's Address) and to Totara as the winning Hapu on the day, Rimu second, Karo and Awhina - third and fourth. As runners finished, they were treated to a sausage sizzle by our girls Waka Ama team, fundraising as part of their drive to compete at Nationals in about four weeks.



Senior Champions, Luke Forsyth and Paige Taylor

Meet some Year 9s



Name: **Ambrose Sutton-Bedford**
 Came from: **Francis Douglas Memorial College**
 Looking forward to? **Doing lots of different classes, rather than lots of the same thing**
 First Impressions of OHS? **Better than FDMC**
 Trimester One subjects: **SciFit (Enviro/Science), Fantastic Beasts (Science), Art 101, English, Maths, Social Science**

Name: **Danielle Golan**
 Came from: **Opunakē Primary School**
 Looking forward to? **Mainly free lunches, but making new friends also**
 First Impressions of OHS? **It's fun and the people have been nice.**
 Trimester One subjects: **Electric City (Science), Cooking Passport, Forest, fruits & bees (Science), English, Maths, Social Science**



SCHOOL APP

Go to the App Store or Google Play on your Apple or Android device and Search 'SchoolAppsNZ' to download the app onto your device.

Search 'Opunakē High School' to find us.



Opunakē High School
 Te Kura Tuarua o Opunakē

Centenary
 Celebration



A vintage weekend for one and all

After a five year break the vintage machinery returned to Turuturu Road. The Taranaki Vintage Machinery Working Weekend at the Turuturu Road site next to Lintern Engineering on the outskirts of Hawera is a biennial event which had been last held in 2018. Lockdowns and COVID restrictions meant it couldn't be held until last weekend.

This year the Taranaki Vintage Machinery Club were marketing it as a "Fossil-Fuelled Extravaganza."

On Saturday members of the Taranaki Vintage Car Club were busy directing traffic and collecting money as visitors filled up the paddocks used for parking. The Vintage Car Club had tried several times to hold a car show as a fund raiser for the Cancer Society. Each time the event had to be called off. Now the money they were raising would go to the Cancer Society.

Once in the grounds a wide



Haymaking.

variety of displays, activities and demonstrations were on offer.

"It's what this community needs on a regular basis to keep it together," said Linda Lintern. "Look at how many are here today, and we're expecting more tomorrow. Look at everyone having

fun. You can't beat that."

Taranaki Vintage Machinery Club member Wayne Brown voiced similar sentiments.

"This is so cool. If it wasn't for these guys this kind of thing would be lost forever."

There were rides on the 1905 Fowler Road Locomotive dubbed Black Beauty, and for those wanting something smaller in scale Alf Christian was giving rides on his scale model Burrell traction engine. This had been built by a retired engineer from Ashburton as his "retirement project," before selling it to a friend from Whangarei. Alf bought it about 10 years ago, and since then has shown it in Tauranga, Christchurch, Napier, Hastings and Feilding.

When he was in Christchurch the engine broke down, so he decided

that with Ashburton not being far away he would get the help of the man who made it.

"That was about six years after he sold it, and he thought he would never see it again," says Alf.

Geoff Grierson was giving a demonstration of blacksmithing. He had done his apprenticeship 50 years ago with Union Foundries in Stratford. He hadn't been doing any blacksmithing for about 20 years and then started again with the Stratford Pioneer Village. He says he now does it as a hobby.

Malcolm Pease of Eltham had equipment his father Percy had used in his milk business including a bottling machine Percy had invented in 1943.

"During the war you couldn't get white glass for the bottles, so the

contract was given to Lion Breweries. That's why you've got brown bottles," says Malcolm.

Among the stationary engines on display was Bruce Hogan's three horsepower 1910 Hornsby. Bruce says he and his wife had seen it at a show in Feilding before the first of the COVID lockdowns. Later his wife had suggested going back and buying it.

"I've been doing this for 30 odd-years," says Bruce. "It's just a pure hobby. A dirty hobby, but we enjoy it."

Seven members of the Wairarapa Vintage Machinery Club were there for the weekend. Jim Clark of Martinborough was showing his 1917 Lister stationery engine.

"It was given to me by a digger driver," he says. "It was in the bucket of his digger and his instructions were to bury it. It sat outside for 50 years and it was a ball of rust, but as you can see it's working great. It tops

at 350 revs per minute and probably ran a dairy shed, water pump or saw bench."

Jim said he had met Bruce Hogan on a previous trip to Hawera and Bruce had shown him around the area.

"Then they came down to a gig we had, Wheels at Wairarapa, and I thought we had better return the favour."

Among the groups taking part was the Taranaki Military Vehicles Club. Jim Baker has been collecting military vehicles since 1976 and was there with the Bren gun carrier he picked up in that year. This had been assembled in New Zealand by General Motors in New Zealand in 1942, and like all the others had never been sent overseas. It did however enjoy a moment of fame in the iconic early 80's "Dear John" TV commercial.

"They gave us a hundred dollars to go to Wellington, which never covered any of the costs, but it was good for a laugh," says Jim.



Jim Clark and his Lister stationary engine.



Black Beauty.



We have a new Tow and Fert based from our Auroa Depot.

**Need grass in a hurry?
Consider this!**

Specialising in Nitrogen and Gibberellic Acid mixes.

- Cost-effective option to help speed up grass growth with a quicker response.
- Great value for money.
- Use half the Urea content to also help keep your N Cap down.
- Can spread any soluble fertiliser.

Give the team a call to book it in, 0800 707 404 - option 2



The red white and blue roar into Opunake

Cyclone Gabrielle and disrupted ferry sailings did not stop there being a record number of entries at this year's Americarna. The annual celebration of the American automobile traditionally revs off with a cruise along the Surf Highway to Opunake and a stopover at Opunake Beach. On Wednesday February 22, John Rae, the man whose name has become synonymous with Americarna could be seen fielding calls on his mobile while surveying the line of vehicles coming into Opunake.

There were about 900 entries more than they had ever had, he said.

"There are probably not as many hot rods as I would have liked," he concedes.

There had been some uncertainty with cancelled ferry sailings and the effects of Cyclone Gabrielle on the East Coast and Hawkes Bay.

"With the Inter-Islander ferry we had about 40 or 50 cars that couldn't make it, but fortunately we had a late rush of entries, so we still had 900 or close to it by the end of the week," said John.

Among the guests at this year's Americarna were Gabe Lopez of Southern California, his wife Luz and son Jesus. John says Gabe's custom interior shop has won more awards in the United States than any other auto trimmer. Gabe started his own business as a 16 year-old and has been in the trade for 45 years. Jesus is now in business on his own. For Gabe and Luz this was their first Americarna, although Jesus was here in 2017.

"I came out for Americarna and told my Dad how great it was and that he had to come," says Jesus.

A truck that has become something of an Opunake icon was among the vehicles parked at the beach. Although now owned by



Coming into Opunake.

Graeme Hawkes, the 1974 International D1100 truck was for most of its life owned by Sandy Southcombe who ran a local house moving business.

Graeme said the truck was two years-old when Sandy bought it second-hand.

"Back in the day one of the locals wanted a couple of buildings moved. One thing led to another and it turned into a local business for him."

Sandy now lives in New Plymouth, but had made a special visit back to Opunake for Americarna. He recalls that when his business merged with Britton House Movers the truck was painted in their colours Federal Yellow which it has remained until this day. Sandy took back the truck when Brittons pulled out of the area, and sold it to Graeme two years ago.

Geordie Robb of Egmont

Village was giving a polish to his 1957 Chevrolet four-door station wagon. It was the first time at Americarna for the Chevrolet, but not the first for Geordie. In previous years he had brought a 1958 Oldsmobile or a 1966 pick-up truck. He had had the Chevrolet for the last 25 years and spent the last 16 years doing it up.

"It's been on the road since the end of last year, so it hasn't done many miles yet. I saw another wagon like this advertised in America. A friend looked at it, then found this one in Bakersfield, so I ended up buying it."

For Damien and Rachael Pease it was their second visit to Americarna. They now live in Hamilton, but Damien is originally from Hawera, and at one time had a business in Inglewood. They were there with their 1982 Chevrolet Al Camino, a car which Rachael said

she had always wanted to own. Damien says it had originally been gold painted, but he had stripped it down to the bare metal and "did a full job." The motor is still the same though. A new one had been added shortly before they bought it.

Also from Hamilton were friends Toni and Stefan Brown, and Emma and Aaron Skinner. This was their first Americarna. They had planned to come in two vehicles, but one of them wasn't ready so they arrived in Emma and Aaron's 1963 Impala. They had been booked in last year, but COVID had put an end to that.

They were enjoying their visit to Opunake.

"This is a beautiful spot with the town and the campground. It's idyllic," says Stefan.

Continued page 19.



Hamilton visitors Toni and Stefan Brown, Aaron and Emma Skinner.



American visitors Luz, Jesus and Gabe Lopez.



Geordie Robb gives his Chevrolet a shine.

The red white and blue roar into Opunake

Continued from page 18.

Emma says she would have liked to have seen a bit more of Opunake.

“They need to have a stop in town. I saw some interesting shops I would have liked to have checked out.”

Malcolm Hogwood and Yvonne Kendrick, also from Hamilton like Americarna so much they are here for their fourth time.

“It’s probably our fault that there’s more people from Hamilton here, as we go back and tell everyone how great it is,” says Yvonne.



Rachael and Damien Pease and their 1982 Chevrolet Al Camino.



Americarna sweeps through Okato

Late morning in Okato on Wednesday February 22 the 900 strong Americarna fleet swept through Okato. They had set off earlier in single file from the TSB Stadium, Rogan Street, New Plymouth.

This was the fifteenth Americana event in New Zealand, but the first one since 2021 because of Covid. The vehicles were met by a large enthusiastic crowd, with students from Coastal Taranaki School well-represented and cheering loudly. It looked like the entire school was out in force. Two students who were captivated by the sound and sight of the classic American cars were six-year-olds Tyde and Bodhi. Bodhi especially liked a red car which drove past and also a Lamborgine.

Avidly watching were Whitney and Ben Callander with their youngster Aubrey. “The kids love it, it’s wonderful,” commented Whitney. They were especially looking out for a 1951 custom grey Ford being driven by Ben’s father Ron, Aubrey’s grandfather.

The variety of cars was staggering, in a rainbow of colours, some with open tops, many with the Stars and Stripes fluttering, some drivers wearing Stetsons, the fleet accompanied by much revving of engines and tooting of horns. It was a great spectacle.

The next issue of the Opunake and Coastal News is coming out on March 23, 2023.



Aubrey, Whitney and Ben Callander enjoying the Americarna spectacle.



Arriving in Okato.



Coastal Taranaki School students were out in force to see the Americarna vehicles.

Central Districts Field Days



Corkill Systems will be exhibiting at the Central Districts Field Days.

Corkill Systems use the latest technology to provide high energy efficiency, functional, cost-effective and low-maintenance control systems. They provide manufacturing companies and primary industry sectors with automation control systems, PLC programming, and manufacturing services. Their international client base is constantly expanding, and they delight

and excel in assisting manufacturing companies with innovative control solutions for their products and systems.

They specialise in vacuum pump, milk pump controllers, and stand-by dairy power systems. Their product range includes the CSL Varivac, CSL Milkflow Controllers, Rotary Lobe Milk Pumps, Vacuum Pumps, Stand-by Power Systems, Rotary

Platform Controllers and Specialised Controllers for your individual needs.

A strong emphasis is put on energy-efficient equipment particularly for use in the Dairy Industry. CSL imports high-efficiency vacuum pumps from Australia and has generators and lobe pumps manufactured to CSL specifications in China and imported directly.



Old machinery exhibits.



Fence post drilling.

DOES YOUR EFFLUENT SYSTEM MEET CONSENT REQUIREMENTS?

EFFLUENT DESIGN & BUILD

Chat to Davieth Verheij AgFirst Engineering Director & Lead Effluent System Designer at **Central Distracts Field Days**



Central Districts **Field Days**

Site number H32

0800 118 111

engineering@agfirst.co.nz
agfirstengineering.co.nz



Central Districts Field Days

Central Districts Field Days is a unique agricultural event that attracts over 27,000 people each March for three days, to friendly Feilding in the Manawatu where they connect, discover and experience the future of New Zealand's primary industries.

CD Field Days is central to business, central to rural connections, central to supporting local and has been bringing Kiwi communities and industries together for the past 29 years. The event has grown from a collection of marquees to a significant national event, attracting exhibitors and attendees from across the country to the rural heartland of the North Island.

From farmers and foodies, to tech-heads and townies, New Zealand's largest regional field days has something for everyone.

The event showcases, cutting-edge machinery and equipment, the latest developments in rural innovation, thrilling FMX shows, lifestyle trends, top-notch regional food and local brews. You can score yourself a heap of exclusive event deals and have the



Located at Manfeild, compelling a transformation from a paddock to a mini town over a matter of days

chance to yarn with sellers and exhibitors. It's a great time to stock up, plus there's fun and freebies for the

whole family. CD Field Days had it's 28th event in March 2021. Now well-established and the

largest regional field days in New Zealand, generating over 50 million dollars in sales revenue, its roots

stretch back to 1993 when it was introduced by Don Eade as an annual event. If you visited CD Field

Days during any one of its 28 years you're bound to find that a number of things don't change:



manorbuild
building the future

Quality Transportable Homes



PRE-BUILT HOMES



AFFORDABLE



HIGH SPEC

0800 626 672 | www.manorbuild.co.nz

Labour saving tips for effluent management

Labour is one of the biggest costs to business and with a nationwide staff shortage there's no time like the present to be looking at ways to make processes more efficient so staff can be utilised more effectively. Here's some labour saving tips for farm effluent management...



Michael Prestidge

Not only can the bladder be used to store effluent until spreading is appropriate, but the additional storage capacity will mean the farm should pass council compliance without the need for consent.

Effluent equipment

Invest in effluent equipment that is easy to use. Not only does this make the job more enjoyable for staff, but equipment requiring less skill means you're not reliant on the availability of skilled or specialised staff to do the job.

A common misconception is that a pumping system is the most labour efficient option. While it can have

the benefit of automated running, it does take a while to set up and requires skill to get it right. Things can go downhill fast if the system isn't set up properly, and it can get worse if there's not someone who knows how to fix it nearby.

Feedback from farmers who have a pumping system as well as a slurry tanker (with auto-fill) is that the slurry tanker is easier to use, faster to set up, and staff prefer it.

If you're using a drag hose system, adding a remote diverter can turn a two-person job into a one-person job – that's a 50% labour saver. The remote diverter allows the user to divert effluent right from the tractor seat without needing to drive back to the pump.

Contractors

Of course, if you don't have the resources to do it yourself, you can always contract the job out.

For farmers using contractors we would still



Invest in equipment that is easy to use.

recommend investing in your own slurry stirrer. Not only will it make the contracted job more efficient (aka cost effective) if

you've got the pond ready and stirred before they arrive, but regular stirring helps maintain the effluent biology so you'll have better

performing nutrients.
*Michael Prestidge
Nevada Effluent
Management Specialist.*

NZ FARMERS LIVESTOCK

WANTED TO BUY

**Dairy Herds and Dairy Heifers
for the coming season**

Contact:

*Bryan Goodin - 027 531 8511
Sheldon Keech - 027 222 7920*

Puzzle solving behaviour in bees

Bumblebees learn to solve puzzles by watching more experienced bees, and this behaviour then spreads through the colony, according to international researchers. The team trained bees to use a puzzle box to access a sugar solution, then released these 'demonstrator' bees into a

foraging area with untrained bees and filmed them over six to 12 days. Foraging bees with a demonstrator opened more puzzle boxes than control bees, and used the same puzzle solution 98% of the time, suggesting that they learned the behaviour

socially rather than stumbling upon a solution themselves. In another experiment where untrained bees learnt two different puzzle solutions, they would randomly develop a preference for one, which would then become the

dominant solution in that colony. This kind of social learning has already been documented in primates and birds, but this is the first study to document this kind of behavioural spread in tiny brained bees, according to the team.

Herbicide resistance maybe growing

Although Australia and New Zealand recorded their first cases of herbicide resistance around the same time, Australia has since then had many more cases of herbicide resistance than

New Zealand, potentially due to a couple of factors that have shielded New Zealand thus far. However, New Zealand researchers say there's more evidence that greater resistance problems

are growing within New Zealand's crop-growing and grape-growing industries, and call for more research and testing.

*New Zealand Journal of
Agricultural Research*

Adapting to climate change

Farmers carrying large debts, and those who farm flood-prone land because it is less expensive, are among the least able to adapt to climate change, new surveying shows.

The survey also shows

younger farmers tend to view climate change regulations as more fair than older farmers.

The study author calls for more local level engagement with farming communities,

as their perception of fairness influences whether they will participate in climate adaptation activities.

Journal of Rural Studies

HIRE THE LORD OF THE TREE RINGS

TARANAKI'S LARGEST MOBILE LOG SPLITTER!

Splits more than 50 cu/m in 8 hours just about anywhere on your farm.

Lifts and splits massive rounds straight onto your trailer.

\$200 per hour + GST including operator.

FOR MORE INFO, CALL JOE GOODIN
TEL: 027 688 5372

NZ's Leading Dairy Effluent Management Specialists



nevadagroup.co.nz | 0800 464 393

A virtual future in the here and now

Halters has come a long way from its beginnings six years ago on Craig Piggot's Morrinsville dairy farm. Seven to eight months ago they moved into Taranaki. Among the first in the province to join up were David Knowles and Becky Corlett who milk 600 cows for David's parents on a 230ha effective dairy farm inland from Midhirst.

Last week about 30 people were at an Open Day held on their farm to hear for themselves what Halters can do, with Becky and David, along with Theo Beaumont who heads up Halter's work in Taranaki fielding questions and talking about their experiences.

The ergonomically designed smart collars designed by Halters are leased to farmers and help them keep a tab on what their stock are doing on the farm. The collars attached to each cow are GPS enabled, which means farmers can keep an eye on where each cow is 24 hours of the day. They are also solar powered, so aren't subject to the normal vicissitudes of electricity supply. It is therefore easier to know where the cows are during weather events.

The collars come with an app that can translate human intentions into signals that the animals can understand. This means, among other benefits, the app can be used to virtually fence stock with a cue given to a cow when she wanders over a virtual fence line. This means there is less time taken on chores like fencing and more time for other work around the farm.

"The main issue here is staffing," said Becky. "This



A virtual grazing line.

is a big farm and there's a lot going on."

She says they joined up in June last year and were able to have all their heifers collared before calving. It took about three days for the heifers to learn how to use the collars, and 1-2 days for the milkers.

Having the programme meant it was easier to run multiple mobs on the farms. Becky said it was also helpful when putting stock on to the turnips in ensuring each cow got their fair share.

There are also animal health benefits. Becky said by observing animal behaviour they had been able to pick up cases of facial eczema before any physical signs were evident.

"You want to know as early as possible if there is something wrong," says Theo. "It's better to look now than a week later when it comes out of the vat."

The system is controlled by a series of towers on the farm. On David and Becky's farm there are seven. Theo says that a smaller dairy farm on flatter country may have only two. The most he has ever seen on a farm is 22.

Jeremy O'Connor of Halters said there is a lot of interest being shown in Taranaki and a recent open day at Sam Hughson's place near Hawera had attracted 100 people.

Theo says before signing farmers up for two-year contracts they discuss with them whether or how Halters would suit their farming operation, including the effects of any change in dairy payouts.

Becky says she likes the way she can contact somebody at Halters at any time if problems arise.

"We can see your farm," says Theo. "Instead of trying to talk to each other over the

phone and describing what's happening, we can log on to the farm and see what the farmer is seeing."

Becky says they are pleased with how signing up with Halters has worked out on their farm.

"Where we are now it pays for itself," she says. "We can be better farmers and it's easier to farm."

NZ FARMERS LIVESTOCK

For all your
Livestock requirements
Servicing the Coast

Contact

Bryan Goodin - 027 531 8511
Sheldon Keech - 027 222 7920

NITROGEN CAP FARM REPORTING SERVICE



Have you started this season's report yet?

We have inhouse administration and technical expertise available to do your nitrogen cap submission.

Get in early and we'll take the hassle away for 2022-2023 season's reporting. Save hours of your time.

**NEW
SERVICE
OFFERING
TARANAKI
WIDE**

APPLY LIME & SAVE



**PRICE
DROP
UNTIL
31 MAR
2023**

0800 432 866 | fbt.co.nz



Becky (with Angus), David and Theo field questions at the Halters Open Day.



LIVING AWAY FROM OPUNAKE BUT WANT TO KEEP UP WITH WHAT'S GOING ON?

Subscribe to the Opunake & Coastal News and we'll post you a paper as soon as it's out!

06 761 7016

OPUNAKE & COASTAL NEWS

Two days two gold medals for Toby

Two gold medals at the National Track and Field Championships for competitive walker Toby O'Rorke suggests a very successful future for the sixteen-year-old Opunake athlete.

The event was held in Wellington at the Newlands Stadium where Toby won the 5,000 metres event on Sunday March 5 (in 25 minutes and 5 seconds) and on Thursday March 2 the 3,000 metre event (in 14 minutes and 8 seconds), equalling the Taranaki Under 18 Men's record. "I was shocked. I wasn't worried where I came, but once I got on the podium I was all smiles."



Toby O'Rorke with his well earned medals.

Toby's coach for 2-3 years and is credited for his valuable input. "It's half and half. He's the one who gives me the work, but I need to get out there too." Toby trains six days a week, with three days in the gym at the Event Centre, Opunake. Of his coach Toby concludes, "He's tough, but he isn't. He messaged me just after the events."

Toby is a boarder at Francis Douglas College in New Plymouth, studying Woodwork, Religious Studies, Mathematics, English and his two favourites Agriculture and Gateway. When he leaves school his goal is to secure an apprenticeship in the building trade.

Toby is aiming high as regards his future as a competitive walker. In 2024 he hopes to qualify for the Under 20 World Championships, as well as the World Road team and later both the Olympics and Commonwealth Games. "However, firstly I've got to make the New Zealand team," he concedes.

Congratulations Toby and all the very best for the future.

His success was hardly unexpected as he had the fastest qualifying time in both events.

In 2022 Toby competed in just the 3,000 metres event and was placed a creditable second.

Toby was proud to be part of the Taranaki team, which won an impressive seven gold medals and two silvers on this occasion. He is a member of the Egmont Athletics Club, who have been supportive of his endeavours.

Stay active throughout your adult life

Staying active throughout your whole adult life gives you the best chance of keeping your brain function healthy as you age, according to international researchers.

The team looked at how much exercise a group of nearly 1500 people were

doing at five stages of life, from age 36 onwards, when compared it to how well they performed in cognitive tests at the age of 69. The researchers say those who were active at all time points were most likely to have higher cognitive performance,

memory, and processing speed. The researchers say being active at any of the time points also improved the chances of a better test score compared to being inactive.

Journal of Neurology Neurosurgery & Psychiatry

Taranaki Air Rifle Club

It was a real hot Saturday and so to shoot indoors was a relief from the burning sun. Geoff Coubrough had a return to form shooting some tight groups. Mark Evans was the man of the day, having a tight group with his handicap to score 138.75,

closely followed by last week's winner Nigel Kay leaving Geoff Coubrough on third. Grouping scores were : Mark Evans 138.75, Nigel Kay 222.35, Geoff Coubrough 792.6, John Costain 1063.35, John Chandler 1190.5. Other

shooters tried outside on the 50 metre range. The best of those was Keith Zehnder and Shane Roberts. Those two will be a force to reckon with next time a competition at 50 metres is held.

Frank Eustace

On this month in history first flight around world

On March 2, 1949 Captain James Gallagher (born 1920) led the first aeroplane flight to circumnavigate the globe. There were 14 crew aboard the B50 Superfortress Lucky Lady. They left from Carswell Air Force Base, Forth Worth, Texas and 23,452 miles later and 94 hours one minute were back at the same place. They had to refuel four times in mid-air. James retired from the US Airforce in 1972 as vice wing commander and colonel. He died in 1985 in Washington DC and is buried at the Arlington National Cemetery.



Corkill SYSTEMS LTD

5 TASMAN ST, OPUNAKE

FREEPHONE: 0800 107 006 PH: 06 761 7531 - FAX 06 761 7336

Silent Diesel and Industrial Tractor Mount Generators For Dairy Sheds, Houses, Pump Sheds and Commercial Sites

Tractor Mounts Features:

- Supplied with weather proof cover
- Dials facing cab (one man operation)
- Heavy Duty Driveshaft
- Heavy Duty Construction
- 1000RPM Direct PTO Driven (no gearbox or belts)
- Backup and Repair Service for all Generators



Sizes to suit all situations

A full range of cabling and outlet options to suit your personal requirements



Check out our new website

www.corkillsystems.co.nz

P.G. O'RORKE CONTRACTING

Undersowing and Roller Drilling



Ph 027 451 4425

Celebrating Fleetwood Mac

Landslide is an Auckland based live 5 piece band who have been celebrating the music of Fleetwood Mac and Stevie Nicks for the past 10 years, covering well-known classics from Fleetwood Mac and also Stevie's solo hits.

The band will be playing a volley of well known classics such as Dreams, Sara, Rhiannon, The Chain, Go Your Own Way, Seven Wonders, Don't Stop, Edge of 17, Tusk, Gypsy, Black Magic Woman, Rooms On Fire, and Little

Lies they're all there. Full lighting, sound system and liberal four part harmonies help to bring these timeless songs to life.

Band Members are Andrea Clarke (Vocals), Taine Ngatai (Guitar/vocals), Garin Keane (Keyboards), Lee Cooper (Bass/BVs) and Gareth Scott (Drums).

Performing at Butlers Reef this is a great opportunity to hear this talented band who have gathered fans wherever they've played around New Zealand.

Well worth a look, check them out at <http://www.facebook.com/landslideshow>

Comments from some besotted fans:

Watched you guys play last night absolutely loved it, you guys rock and was owesum to have the last song thrown my way. Cheers Garin. Andrew Hammon

Taupo please. Cerise Cranston

Masterton please!! Love you guys so much. Jackie Forbes

Kate Butler these are amazing you should defiantly go see them When they are in Wellington you won't be disappointed. Kerry Butler

Come back to Whanganui! Caitlin Petty

Please come to Cambridge/Hamilton! Saw you guys for my hens 5 years ago! Best night!

Katie Beaumont

Come back to Cambridge or Hamilton pls! Cyndi Wicks

Seen them at The Playhouse they are really good. Andrea Borri

A good show - great watch, great musicians! Well worth it! Roger Crisp

Love this group. Faye Graham

Wow, what an amazing performance. Loved the Refugees Landslide duo. Super talented lead guitar too.

Thanks! Keith Colson



LANDSLIDE

Fleetwood Mac/Stevie Nicks Tribute Show



Butlers Reef - New Plymouth

Saturday, March 18th. 8.30pm

Tickets \$35 from eventfinda.co.nz

www.facebook.com/landslideshow

Muddy Thursdays at The Village Gallery

Muddy Thursdays – 9 March to 8 April (but closed Good Friday, 7 April)

Curated by Margaret Foley, a wide range of pottery and mixed media pieces will be exhibited by a group of potters who meet together on Thursdays at the New Plymouth Potters Club building, the historic Te Henui Vicarage. This will be a 'Cash and Carry' Exhibition, with items being able to be taken when full payment has been made. Margaret and some of the other potters will be present at the Gallery each Saturday



of the exhibition and the public are invited to call in to meet with them when they will be 'artists-in-residence'. They will be happy to discuss the work on display and the various methods and materials that have been used.

*Sue and Henry Morton
The Village Gallery*

Left: A Faye Sumpter bowl.



Above: A Margaret Foley pot.

Left: A pair of Mike Corry pots on display at The Village Gallery.



MUDDY THURSDAYS A POTTERY EXHIBITION

10 MARCH - 8 APRIL 2023

'exciting works from this large group of artists'

THE VILLAGE GALLERY

166 HIGH STREET
ELTHAM
+64 6-764 5443



HOURS: TUES - SAT
10.00 am - 3.00 pm



TARANAKI DIOCESAN

SCHOOL FOR GIRLS
Formerly St Mary's Stratford

An integrated Anglican Year 9 - Year 13 Boarding and Day School in the heart of Taranaki

OPEN DAY

Wednesday March 22: 10am-2pm



We look forward to meeting you and showing you our school

- Weekly Boarding, Part Boarding (2/3 nights), Day students • Daily transport options from, and to New Plymouth and Hawera • Contact us for a prospectus package • Take a Virtual Tour via our website

*Courageous
Resolute
Successful*

Broadway North, Stratford
Ph 06 765 5333
Email: office@taranakidio.school.nz
www.taranakidio.school.nz

*Kia maia
Kia Angitu
Kia Manawa
Piharau*



NEW PLYMOUTH BOYS' HIGH SCHOOL
TE KURA TAMATĀNE O NGĀMOTU

Boarding Open Day

Tuesday 4 April



Join us at our Boarding Open Day on Tuesday 4 April, starting at 10.15am.

For your invitation, please register at:
NPBHS.SCHOOL.NZ

Oliver Cole (Patea), Head Boarder Clay Potts (Ohura), and Arlo Wells (Stratford)

KIA TŪ HEI TAUIRA | BE THE EXAMPLE

Curious Minds Taranaki Funding available now

Answering the challenges of the future begins with asking the right questions now. Facilitated by Te Puna Umanga/ Venture Taranaki, Curious Minds Taranaki gives communities the scientific expertise and resources they need to investigate meaningful questions about their region.

Since its establishment in 2015, Curious Minds Taranaki has given over \$1,100,000 to more than 60 participatory science projects. Utilising the principles of citizen science, Taranaki residents have been able to answer the questions that are important to them. They've explored our seas, searched for bats, and



revitalised traditional Māori dyeing practices, to enable a more knowledgeable, scientifically-aware, Taranaki.

The participatory science model is an exciting way for a diverse group of people to come together to exchange and build on their knowledge. School students are exposed to learning experiences that are relevant to them and their community, while teachers discover new ways to engage their students. Science experts find new ways to apply their skills and improve the quality of their

Curious Minds Taranaki Project: He Whenua, He Tangata, He Oranga: A Fashionable Fight.

research by tapping into local knowledge. For mana whenua it's an opportunity to combine mātauranga Māori with scientific techniques to care for the taonga of their rohe.

The Curious Minds Taranaki funding round is now open for expressions of interest for grants of up to \$20,000. If you have a question, an idea, or a spark of curiosity about something in your area, get in touch and see whether your idea can be turned into a research project.

For more information visit curiousmindstaranaki.org.nz, or contact Thom Adams, PSP Curious Minds Programme Coordinator at thom@venture.org.nz.

Taranaki National Art Awards 2023

Our committee met recently to regroup and catch up after the summer break. We're all re-energised and ready for action as we once again embark on the planning process for our annual Art Awards and Exhibition.

We took time to reflect on the successful 20th Anniversary celebration held in 2022. We received 359 entries across the 7 categories, coming from 49 towns & cities across New Zealand, representative of our national art event. We recorded volunteer contributions in excess of 3000 hours, welcomed over 1200 visitors through the door to view and appreciate the exhibition, and enjoyed a record number of art sales!

Extending the exhibition timeframe to 9 days to fully include both weekends alongside the Arts Trail has had a positive impact. There was a flurry of art sales on the Awards Opening night as well as the final weekend.



The Taranaki National Art Awards will be held again in 2023.

We would once again like to extend our thanks to all the artists who enter, our awesome committee and dedicated team of volunteers, all the local community groups and businesses who support the TNAA, and our many loyal sponsors. Your positive and creative energy, inspiration and mahi, advice and support, contribute to

the vibrancy and success of this event year after year.

During the exhibition we have the opportunity to meet and talk with so many people from throughout our local region and beyond. The feedback we receive is invaluable and often thought provoking, sparking ideas and creative conversations. We particularly enjoy meeting people who've recently gravitated to

the coast, artists and appreciators alike, and we welcome the enrichment and diversity this brings to our community.

On this note we are holding our AGM on Thursday the 30th March, 1pm at the Sinclair's Event Centre. Please feel free to come along if you're keen to be involved and interested in finding out more about who we are and what we do.

Light refreshments will be provided.

There's a variety of ways to support and contribute to The Taranaki National Art Awards and we're always curious to hear new ideas and receive feedback that can help to improve and enhance our creative showcase.

Nga mihi, Megan Symons
Please get in touch contact@taranakiartawards.com, follow us on Facebook.

CURIOUS MINDS TARANAKI FUNDING AVAILABLE NOW

Grants of up to \$20,000 are available to support community based science and technology research.



To register your idea or find out more info, visit curiousmindstaranaki.org.nz

CURIOUS MINDS
HE HIHIRI I TE MAHARA

venture
TARANAKI
Te Puna Umanga

Tug Of War Competition

March 25, 12pm

Teams of 3 - \$5 entry per person
all proceeds going to Life Flight

Call 06 764 6770 and register your team



It's been 12 months since Mark's (publican) accident. We would like to give back to a service that helped us during a horrific time.

Life Flight

Saves time · Saves lives

49 Egmont St, Kaponga

06 764 6770

Follow our Kaponga Hotel facebook page for daily promotions and updates.



Cue Theatre play inspired by Welsh tragedy

TET Cue Theatre's first production for the year is 'The Revlon Girl' written by Neil Anthony Docking and directed by Michelle Chainey and Sharren Read. It is funny, feisty,

heartbreaking but hopeful. Based on a true life event, this play takes place in June 1967, eight months after the Aberfan disaster in Wales, where approximately 150,000 tons of coal waste

slipped down the mountain side after heavy rain, killing 144 people, 116 of them were children.

The play is set in the function room of the local pub where local women meet regularly to share their grief as a form of therapy.

During one of their meetings we meet Sian, Jean, Marilyn and Rona who have secretly arranged for

'The Revlon Girl' to come and give a presentation of her products, to provide not only a distraction but also to help them feel better about themselves and not feel guilty about doing so.

With recent disasters occurring in New Zealand this play has become more relevant and poignant. How does one cope with the aftermath of such a horrific

unimaginable event? How does one go on and find hope?

Unraveling each of the characters stories has enabled our actresses to understand and empathise with their characters and bring them to life.

Come and see Maddy Klever, Shae Trownson, Suzy Adair, Kijiana Pene and Kaila Le Maitre portray

these women and hear their stories.

This play has been described as shocking and heart breaking yet funny and uplifting. Well worth seeing.

The show is on from Wednesday March 15 to March 25.

Tickets are available from the Cue website or from the Fun ho museum in Inglewood.



TET CUE THEATRE

The Revlon Girl

By Neil Anthony Docking
Directed by Michelle Chainey & Sharren Read

15-25 March 2023

Tickets from cuetheatre.co.nz / FunHo - ph 756 7030

An Amateur Production of The Revlon Girl by special arrangement with Samuel French and New Zealand Play Bureau Ltd.

World Vision New Zealand launches quake appeal

World Vision New Zealand has launched an appeal to provide urgent supplies to children and families as the toll of the devastating Türkiye-Syria earthquake continues to mount.

Teams on the ground are assessing the escalating needs and providing emergency aid following the 7.8 magnitude quake which has killed thousands, with many more thousands injured.

The World Health Organisation has warned that the death toll may rise to more than 20,000.

World Vision New Zealand National Director Grant Bayldon says the full scale of the emergency is only just



World Vision NZ is supporting children and families affected by the recent earthquake in Türkiye and Syria.

becoming clear and people affected desperately need help.

"Catastrophic does not fully encompass what

is happening in Syria and Türkiye right now. Thousands are dead, thousands are trapped in

the rubble, mums, dads,

children. They have lost family members and their

Continued on page 29

Encanto : **Top Gun: Maverick**
 Sunday 26 March, 4pm : Sunday 26 March, 7.30pm
 @ **Manaia Domain**



Drive In Movie Night

GOLD COIN
per vehicle per screening

Don't miss out on this family friendly event!

Get the whanau in the car and come along to one of our Drive In Movie sessions. Food will be available at the venue

World Vision New Zealand launches quake appeal

Continued from Page 28

homes. They have been left with nothing."

The earthquake has hit families who were already displaced in a region shattered by more than a decade of civil war.

"People are again fleeing for their lives and are desperate for shelter from the cold," Bayldon says. "We are seeing families desperately trying to find a place to go. They are living in cars, mosques are full.

These are families already displaced by a civil war who are now homeless again."

World Vision teams are assessing the impact and starting to deliver emergency aid to those worst affected.

Bayldon says World Vision is well-positioned to help having worked in the region since the civil war erupted in Syria in 2011. The humanitarian organisation has responded to numerous major earthquakes around the globe and has a team of experts trained and ready to

deliver urgent assistance.

"World Vision has done this before – and we know what to do. Thankfully, we already have teams and partner organisations in Türkiye and Syria so we're able to respond swiftly. We're scaling up our operations to provide shelter, heat sources and food to those left with nothing."

World Vision's immediate areas of response will cover Gaziantep and Sanliurfa in Türkiye, as well as Azaz, Afrin and Idlib, in Northern Syria.

Bayldon says World Vision is calling on New Zealanders

to once again show their compassion and generosity.

"We know that New Zealanders understand the devastation an earthquake can bring. We've had our own experiences right here at home.

"There is going to be an overwhelming need for food, shelter, heating, medical care and water in the coming days and weeks in Türkiye and Syria. The generosity and compassion from Kiwis will help provide this emergency aid and support long-term recovery for families who have lost everything," he says.



Church Services - Manaia, Kaponga, Opunake, Pungarehu, Okata, Oakura

Opunake Co-operating Parish

Havelock Street, Opunake - St Pauls - 9.30am every Sunday
Rahotu - Wesley - 11am first Sunday of the month

Okato Co-operating Parish

Okato – St. Paul's – Sunday Service every 1st and 3rd Sundays of each month, 10.00am
Oakura – St. James – Sunday Service every 2nd and 4th Sundays of each month, 10.00am
Mid-week Service – Okato – St. Paul's – Pew for You, every 3rd Thursday of each month, 4.30pm-6.00pm

Opunake Catholic Church

St Martins, Pungarehu: 8.30am every 2nd and 4th Sundays of the month
Our Lady Star of the Sea, Opunake: 10am every Sunday
Other areas
Manaia - Sacred Heart - 1st, 3rd Sat at 5pm (2nd, 4th & 5th Sat at Hawera's St Josephs)
Kaponga - St Patricks, Sunday 8.45am
All welcome

St Patricks Catholic Church, Okato

Saturday Vigil 6.00pm - 1st, 3rd & 5th Saturdays

The Wave

Pentecostal Church 64 Domett St, Opunake
Sunday Services 10.30am
Women's Group 10am Tuesday
Men's Group 7pm Wednesday
Come along or contact
Belinda Philp
027 935 6191

St. Barnabas Anglican Church

141 Tasman St, Opunake
Sunday Services 10am
Communion 2nd, 3rd & 4th Sunday
Prayer & Praise 1st Sunday
Every 5th Sunday all 4 churches gather for a Combined Service

Okato Community Church

Meets 10.30am Sunday at Hempton Hall.
Everyone welcome



If you have a voucher/s as below :



Please redeem them at a local business before September 1, 2023.

We are changing our vouchers to have a stamped expiry date.

Any questions email: OBDA1035@gmail.com

Business Owners can redeem vouchers at Cecelia's on Tasman next to Pastimes, Tasman Street, Opunake.

Looking at the stars

I think most of you know the work of Mimi Shapiro of USA ... and you'll appreciate her new series Looking Towards the Stars. A series of collages on pages from the study notes of a medical



A work by Mimi Shapiro.

student in 1938. Beautiful things. On the Virtual Tart website on www.tart.co.nz.

And do send her a message. Artists appreciate feedback, no matter how well-known they are.

While you're there, do check out the Taranaki artists who show their work in the Showcase section. Some of us have put new work on - well worth a look.

Cheers, and thank you for being there

Dale Copeland

EVERYBODY'S THEATRE OPUNAKE

72 Tasman Street, Opunake - www.everybodystheatre.co.nz Phone 027 383 7926
Adults \$12, Students 4-16yrs and Senior Citizens \$10, Under 4 free

FISHERMANS FRIEND

Comedy | 1hr 51mins | PG
Thursday 9th March 7pm
Friday 17th March 7pm
Sunday 19th March 1pm

CREED 3

Sport, Drama | 1hr 56mins | M
Friday 10th March 7pm
Monday 13th March 7pm
Saturday 18th March 7pm

TAD THE EXPLORER

Animated, Family | 1hr 29mins | PG
Saturday 11th March 1pm

**COMEDY SHOW
A ONE NIGHT SHOW**

Live
Saturday 11th March 7pm
See website for further details

EMPIRE OF LIGHT

Drama | 1hr 55mins | M:Language
Sunday 12th March 1pm

THE HONEYMOON

Comedy, Romance | 1hr 37mins | M
Sunday 12th March 7pm

PUSS N BOOTS - THE LAST WISH

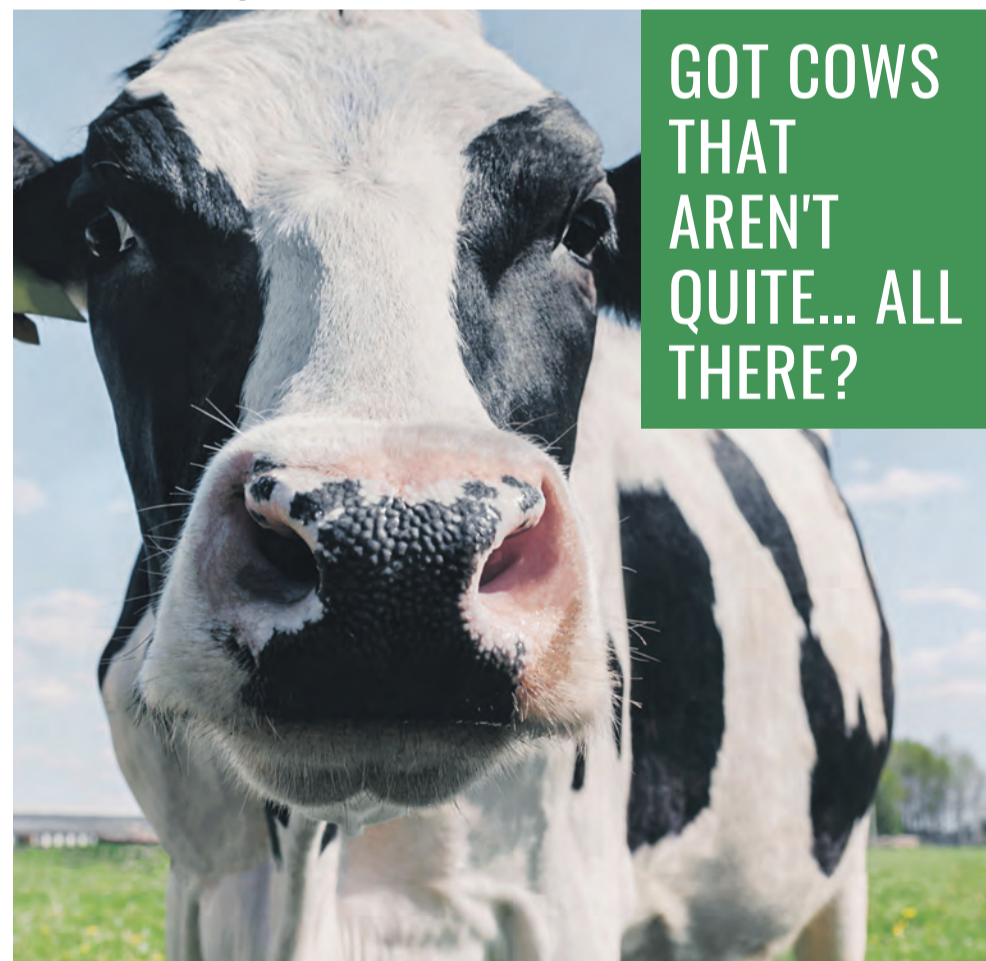
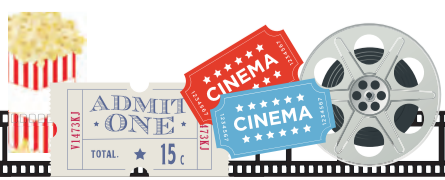
Animated, Family | 1hr 42mins | PG
Monday 13th March 1pm

**ANTMAN AND WASP
Quantumia**

Action | 2hrs 5mins | M: Violence
Thursday 16th March 7pm
Sunday 19th March 7pm

MY FAIRY TROUBLEMAKER

Animated, Family | 1hr 25mins | G
Saturday 18th March 1pm



**GOT COWS
THAT
AREN'T
QUITE... ALL
THERE?**



Kane Barrett
027 403 6469
www.affco.co.nz



Brendon Kelly
027 664 6605
www.silverfernfarms.com



Bruce Thompson
027 445 5285 or
Nigel Corbett
027 453 7602
www.anzcofoods.com

ANZCO, AFFCO, and Silver Fern Farms are working with CoastalCare to help you take care of your "special animals", donating proceeds to CoastalCare Health Trust to help us with the building extensions we need to get closer to our fundraising target!

What's On Listings

COLD SHOWER



- ONGOING**
Movies at Everybodys Theatre in Opunake: Playing several days and nights each week. Refer timetable in newspaper.
MONDAYS: Tainui Day Centre - St Barnabas Church Hall, 141 Tasman Street Opunake: Each Monday 10 am - 12:230 pm. Information call Jenny 7618080 or Glenys 6558025
TUESDAYS
Opunake Walking Group: Every Tuesday 10am. Meet outside Club Hotel on Havelock St. Phone Margaret 027 477 5600 for more info if needed, or just turn up.
WEDNESDAYS
Lisa Keen Audiology at Coastal Care, Opunake: Wednesdays 9am - 5pm, for an appointment call 027 591 4222 - 0800 555 676
Okato & District Historical Society open every Wednesday: At the Okato Community Trust Hall, 47 Cumming St, Okato. phone Meg on 06 752 4566.
Opunake Embroiders Guild: Meet 2nd and 4th Wednesdays of the month, 10.30am-3pm at the Opunake Business Centre, Napier St, Opunake. Just come along or phone Sheryl 06 761 8769.
Okato Market: In Hempton Hall, Okato 4pm to 5.30pm.
Free singing experience with Taranaki Harmony Chorus: Meet every Wednesday at Inglewood Mamaku Centre, 7-9.30 pm Phone Helen 021 296 0700.
THURSDAYS
Coastal Young Farmers: Meet 2nd Thursday of every month at 7pm at Butlers Reef Bar & Cafe, Oakura.
Egmont Euchre Club: Every Thursday 1pm at the Opunake Bowling Club. Inquiries, 06 761 8277 or 06 761 8337
Taranaki Country Music Hall of Fame, Manaia: Running every Thursday night from 7.30pm, 11 Surf Highway, South Road, Manaia.
FRIDAYS
Eltham Business Association Friday Markets: 9:30am to 1pm, Carpark of Touch Point, High Street, Eltham.
Singer Songwriters, New Plymouth: Last Friday of the month at Little Theatre, 29 Aubrey St, NP from 7-11pm.
WEEKENDS
The Historic Cape Light & Museum: Open 11am - 3pm weekends, Bayly Road, Warea.
MARCH 9
Manaia RSA AGM: At Manaia Bowling Club, 7pm.
MARCH 11
Mega Carboot/Garage Sale: 11 Egmont St, Kaponga. 8am.
MARCH 15-25
CUE Theatre presents The Revlon Girl: At CUE Theatre, Inglewood.
Nicky Moran Gospel Concert: at Inglewood Town Hall, 7pm
MARCH 18
Landslide - Fleetwood Mac/Stevie Nicks tribute show: Butlers Reef, Oakura. 8.30pm.
MARCH 19
Pihama Lavender Market Day: 10am-2pm. Pihama.
MARCH 22
Taranaki Diocesan School for Girls Open Day: 10am-2pm. Stratford.
MARCH 24
Drive In Movies: At Manaia Domain. *Encanto* at 4pm, *Top Gun* : *Maverick* at 7.30pm.
MARCH 25
Tug of War Competition: Kaponga Hotel. Fundraising event for Life Flight. 12pm start.
MARCH 30
Taranaki National Art Awards AGM: Sinclairs Event Centre, Opunake. 1pm.
APRIL 5
Opunake & District Business Association monthly meeting: Opunake Business centre, 5.30pm.
APRIL 12 & 22.
New Plymouth Little Theatre presents The Sunshine Boys: See ad and article for more details

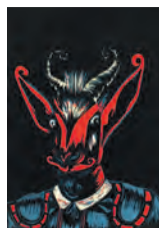
PIHAMA
 Lavender
MARKET DAY
 SUNDAY MARCH 19 10am - 2pm

JANES GALLERY
 Where Picture Framing is an Art
 WE HAVE MOVED TO 33 GOVER STREET, NEW PLYMOUTH PHONE 06 758 8746

The next issue of the Opunake & Coastal News is due out on the 23rd of March, 2023.
 If you would like to contribute, or advertise, call us on 06 761 7016.

PUBLIC NOTICES

Taranaki National Art Awards



2020 Category Winner



www.taranakiartawards.co.nz

ANNUAL GENERAL MEETING
1PM, THURSDAY 30TH MARCH 2023

SINCLAIR ELECTRICAL & REFRIGERATION EVENT CENTRE
TASMAN STREET, OPUNAKĒ, TARANAKI

Rahotu Domain Lease Tender – 2 leases available

Tenders are invited for leasing one or all of the following Rahotu Domain Blocks of land:

1. 12.7990 Ha of land known as Rahotu Domain at 5900 Main Road, Rahotu
2. 2.000ha of land as part of the Rahotu Domain, Rahotu Road, Rahotu

For an inspection of the land and a copy of the lease agreements, please contact Neil Pennington on neil@pennington.net.nz

Both tenders are for 5 year terms beginning 1 May 2023.

Tenders close Friday 31 March 2023. Please clearly indicate which block, or blocks of land, your tender is for with your per annum rent amount for each block tendered for.

Post replies to "Tender"

Cl- Neil Pennington
6339 South Road
RD 35
Rahotu 4685

Note: Highest or any tender not necessarily accepted



Auroa School

734 Auroa Road, RD 28, Auroa, 4678
office@auroa.school.nz

Applications for Out of Zone Pupils

Auroa School is a decile 8 full Primary School (includes year 7/8 students) located in South Taranaki. Enrolment at the school is governed by an enrolment scheme, details of which are available from the school office.

The Board has determined that there are likely to be 10 vacancies available for year 0-6 but no vacancies for year 6-8 for Term 2, 2023.

Applications can be made by applying in writing to the school by either post or email and by visiting the school office.

The deadline for applications is 3pm, Wednesday 23rd March.

If the number of applicants exceeds the number of places available, students will be selected by ballot.

Claire Mullin, Board of Trustees

Opunake Sporting Shooters AGM

Tuesday March 28, 7.30pm
At the Clubrooms, Kaweora Rd,
Opunake
All welcome.

Any messages to Nigel Bright
027 268 8049



Next Meeting is on
Monday April 3, 2023
at 5.30pm
Hughsons & Associates
Boardroom at the
Opunake Business Centre,
23 Napier St, Opunake
(opposite the Coastal Care
Medical Centre)

HAWERA BUDGET
Advisory Service. Wed
9am to 12pm. Coastal Care,
Opunake by appointment.
Starting Feb 8th 2023
and fortnightly thereafter.
Contact us by phone: 0800
333 048 (free from mobile).
Facebook page: Hawera
Budget Advisory Service.
Email: info@hawerabudget.co.nz

TARANAKI AGLOW
INVITES YOU TO A
NICKY MORAN
GOSPEL CONCERT



7-PM SUNDAY 19 MAR 2023
INGLEWOOD TOWN HALL
34 CUTFIELD ST, INGLEWOOD

INSPIRING SONGS OF HOPE, FAITH, LOVE
GROOVY GOSPEL ALBUM ORIGINALS
CLASSIC COVERS + ACOUSTIC + LIVE LOOPING
MINISTRY AVAIL, KOHA WELCOME



nickymoran.com



SITUATIONS VACANT



OPUNAKĒ HIGH SCHOOL
PART-TIME
CLEANER

We are looking for a
part-time cleaner to
work after school hours
5 days per week.
Must be reliable and
honest.

Written applications and
CV to:

The Principal
Opunake High School
PO Box 4
Opunake 4616
admin@opunake.school.nz

Applications close Thursday
16th March, 2023



MANAIA
R.S.A.
88th A.G.M.

To be held in
Manaia Bowling Club on
Sunday 9th March 2023
at 7pm
Gordon Chisnall,
Secretary

GRAZING

May to May grazing
available.
Ph Richard 027 510 9667

GRAZING. May to
May dairy heifer grazing
available. Inglewood area.
Phone Shane 06 756 7372.

GARAGE SALES

KAPONGA
15 Egmont St, 8am
Saturday 11th
Mega car boot sale /
market.
Antiques & collectibles
Vintage china, bottles,
jars .
Tools, kids gear, fresh
produce & much more.
No fee to sell.

PROPERTY APPRAISAL

PROPERTY APPRAISAL. Contact
Tara Gibson 027 766 4456.
McDonald Real Estate Ltd,
Opunake.



OPUNAKE & COASTAL NEWS

This newspaper is subject to NZ Press Council procedures. A complaint must first be directed in writing within one month of publication to the Opunake & Coastal News email address. If not satisfied with the response, the complaint may be referred to the Press Council, PO Box 10879, The Terrace, Wellington 6143. Or use the online complaint form at www.presscouncil.org.nz. Please include copies of the article and all correspondence with the publication.

The next issue of OCN is March 23, 2023.
Ph 06 761 7016 to be in it.

TRADES & SERVICES



Contact Phill - 027 236 7129

P.D. FLEMING LOGGING LTD

Forestry rigged & certified 33 ton loader,
National Certificates in Forest Operations,
Health & Safety approved. Free assessment on
what your trees are worth \$\$\$

Ph: Paul
027 630 9922 or email: paulflems@gmail.com

Garage Doors Specialists



WINDOWS • DOORS • CONSERVATORIES

- Sectional, Roller, Tilt.
- Automatic Openers
- Repairs & Maintenance

Call for a Free Measure & Quote
Email: sales@rylocknp.co.nz | Ph. 06 758 8073



SHEDS • HOMES • EARTHWORKS

022 679 1331 | dogtekltd@gmail.com

HCL BUILDERS for
building decks. Ph 027 236
7129.

McNEIL DECORATING
– for all your painting
and decorating. Ph: Jason
McNeil 027 233 4584.

LAWNMOWING, and
section maintenance by local
contractor SOS. Free quote.
Ph 027 605 8437.

CARPETS second hand,
large selection After
Disaster Ltd 223 Devon St
West, NP. Phone (06) 769

HCL BUILDERS for
concrete work. Ph 027 236
7129.

COASTAL GIB STOPPERS. Phone Glenn
027 524 5745

WANTED TO RENT

HOUSE WANTED by
retired couple. Tidy tenants
and exc, references. Ph 06
761 8384.

WANTED TO BUY

SCRAP METAL - for
all scrap metal Taranaki
wide, give us a call. Molten
Metals (06) 751 5367.
www.moltenmetals.co.nz

WANTED TO BUY

Stevenson Calf Rearing

MILK & COLOSTRUM WANTED

Picking up 24/7

Our tanker handles large volumes

Ph. Mark or Trish on 0800 350 340 or txt
027 495 2897 E: markstevo@extra.co.nz

Troy Stevenson 027 469 7636

E: troystevo@gmail.com

meritcars

with distinction

VISIT WEBSITE MERITCARS.CO.NZ

493 DEVON STREET EAST, STRANDON, NEW PLYMOUTH
CALL US TODAY 06 281 1925

ALL ON ROAD COSTS INCLUDED PLUS TANK OF FUEL. ONE STOP SHOP FOR FINANCE, WARRANTIES & FREE SMILES

2011 TOYOTA HILUX 2WD 3.0 DIESEL D/C

SUPER STRONG & POPULAR NZ NEW
Five Speed, Diesel, Intercooled Turbo, ABS Brakes, Dual Airbags, Remote Central Locking, Electric Windows, Air Conditioning, Cruise Control, Towbar, Alloy Wheels.



THREE FROM
\$18,995

2017 MAZDA 3 2.0 GLX NZ NEW: POPULAR NZ NEW 2.0 HATCH

Tiptronic Auto, I-Stop Technology, Emergency Brake Assist, Hill Hold / Launch Assist, Keyless Entry & Pushbutton Start, ABS Brakes, Multi Airbags inc Side Curtain, Traction Control, 83km



ONLY \$21,995

2020 SUZUKI VITARA JLX ALLGRIP 4WD

NZ New, ABS Brakes, Airbags, Alloy Wheels, Blue Tooth Stereo With Nav & Reversing Camera, Central Locking, Climate Control Air Con, Hill Hold, Cruise Control, Driving Lights, Keyless Ignition



\$26,995

2020 MAZDA CX-3 GLX 2.0P NZ NEW ONLY 27km



ONLY \$29,995

2017 SUBARU XV NZ NEW 2.0L 4WD
Low Km's, AWD, ABS Brakes, Alloy Wheels, Boxer Engine, Bluetooth CD With Aux/USB & Reversing Camera, Central Locking, Climate Control Air Con, Cruise Control, Driving Lights, Multi Airbags,



ONLY \$24,995

WE ARE YOUR ONE STOP SHOP FOR QUALITY VEHICLES. FINANCE AND INSURANCE FROM ZERO DEPOSIT AND ALL ON-ROAD COSTS INCLUDED IN PRICE.

**THIS WEEK'S SPECIAL:
2016 MAZDA 6 GSX**

NZ NEW, Tiptronic Auto, I-Stop Technology, Side Blind Spot Monitoring, Keyless Entry & Pushbutton Start, ABS Brakes, Multi Airbags inc Side, Stability Control, Auto Lights, Auto Wipers, Cruise Control, Alloys, Dual Climate Control Air Con, NZ Stereo with Nav & Bluetooth



\$19,995

2013 NISSAN NAVARA KINGCAB 2.5D 4WD RX NZ NEW 4WD

Flatdeck Ideal Farm Ute, 6 Speed Manual, Diesel Turbo, ABS Brakes, Stability Control, Dual Airbags, Cruise Control, Air Con, Remote Central Locking, Electric Windows, Stereo, Bullbar with Side Steps.



ONLY \$24,995

2014 SUZUKI SX4 S-CROSS
NZ New Hatch, Hill Hold, ABS, Emergency Brake Assist, Stability & Traction Control, Auto Headlights, Multi Airbags, Driving Lights, Keyless Entry & Ignition, CD Stereo With Bluetooth/Aux/USB & GPS



ONLY \$16,995

2012 HOLDEN CAPTIVA LX AWD 7 SEATER:
NZ NEW, AWD, 7 Seater, Tiptronic Auto, Turbo Diesel, Auto Lights, Multi Airbags inc Side Curtain, Cruise Control, Climate Air Con, Remote Central Locking, Leather Trim



ONLY \$13,995

2011 TOYOTA AURION 3.5P NZ NEW LUXURY DRIVING AT AFFORDABLE PRICE
6 Speed, Tiptronic Auto, V6, VWTi



ONLY \$10,995

2019 TOYOTA YARIS GX NZ NEW
Popular NZ New Hatch- Low Km's! Automatic, Power Windows & Mirrors, Remote Central Locking, ABS Brakes, Multiple Air Bags inc Side Curtain, Stability Control, Accident Mitigation System



\$17,995

2002 VOLKSWAGEN BEETLE TURBO ENTHUSIASTS CAR.
Automatic, Intercooled, Turbo, Power Windows & Mirrors, Remote Central Locking, Air Conditioning, Leather Trim, Air Bags, ABS Brakes, CD Player, Body Kit, Spoiler, 18" Alloy Wheels



\$8,995

2010 TOYOTA VANGUARD 5 SEATER PRACTICALITY & GREAT LOOKS
ABS Brakes, Alloy Wheels, CD Player With Aux & Reversing Camera, Central Locking, Dual Climate Control Air Con, Cruise Control



ONLY \$15,995

VEHICLES ARRIVING DAILY - SEE ONSITE SPECIALS
VISIT MERITCARS.CO.NZ



LOCALLY OWNED & OPERATED

Ph 06 281 1925 • Chris Elliot 027 471 5972

Ph 06 757 3585 • Jamie Henry 021 556 223